

TM 55-4920-335-24P

DEPARTMENT OF THE ARMY TECHNICAL MANUAL

---

ORGANIZATIONAL, DS, AND GS MAINTENANCE

REPAIR PARTS AND SPECIAL TOOLS LIST

**TEST STAND,**

**HYDRAULIC SYSTEMS COMPONENTS**

**P/N 674016**

FSN 4920-882-6401

---

HEADQUARTERS, DEPARTMENT OF THE ARMY

AUGUST 1971



TECHNICAL MANUAL }  
 TM 55-4920-335-24P }

HEADQUARTERS  
 DEPARTMENT OF THE ARMY  
 WASHINGTON, D. C., 19 August 1971

**ORGANIZATIONAL, DIRECT SUPPORT,  
 AND GENERAL SUPPORT MAINTENANCE  
 REPAIR PARTS AND SPECIAL TOOLS LIST  
 FOR  
 TEST STAND,  
 HYDRAULIC SYSTEMS COMPONENTS  
 P/N 674016**

**FSN 4920-882-6401**

**Current as of 12 May 1971**

*Table of Contents*

		Listing Page	Illus Figure
Section	I Introduction . . . . .	iii	
	II Prescribed Load Allowance (PLA) (not applicable) . . . . .		
	III Repair Parts for Organizational Maintenance . . . . .		
Group	01 Electrical System . . . . .		
	Control panel . . . . .	3	2
	Electrical accessories . . . . .	3	3
	02 Hydraulic System . . . . .		
	High pressure filter . . . . .	3	6
	Low pressure filter . . . . .	3	
	Lines and fittings . . . . .	4	9
	03 Engine . . . . .		
	Oil filter . . . . .	4	20
	04 Miscellaneous . . . . .		
	Housing assembly . . . . .	4	21
	Drawbar and brake assembly . . . . .	5	23
	Fuel tank . . . . .	5	24
	IV Special Tools, Test and Support Equipment (not applicable)		
	V Repair parts for Direct Support, General Support and Depot Maintenance		
Group	01 Electrical System . . . . .		
	Control panel . . . . .	7	2
	Electrical accessories . . . . .	7	3



SECTION I

INTRODUCTION

1. Scope.

Although this manual is numbered 24P, it includes depot maintenance items as well as the repair parts and maintenance supplies required for the performance of organizational, direct support and general support maintenance of Test Stand, Hydraulic System Components, P/N 674016.

2. General.

This Repair Parts and Special Tools List is divided into the following sections:

a. *Prescribed Load Allowance (PLA)—Section II.* Not applicable.

b. *Repair Parts—Section III.* A list of repair parts authorized for the performance of maintenance at the organizational level, in figure and item number sequence.

c. *Special Tools, Test and Support Equipment—Section IV.* Not applicable.

d. *Repair Parts—Section V.* A list of repair parts authorized for the performance of maintenance at direct support, general support and depot level.

e. *Special Tools, Test and Support Equipment—Section VI.* Not applicable.

f. *Federal Stock Number and Reference Number Index—Section VII.* A list of federal stock numbers in ascending numerical sequence followed by a list of reference numbers in ascending alphanumerical sequence, cross-referenced to the illustration figure and item number.

3. Explanation of Columns.

The following provides an explanation of columns in the tabular lists in sections III and V :

a. *Source, Maintenance and Recoverability Codes (SMR).*

(1) *Source code.* Indicates the selection status and source for the listed item. Source codes are:

<i>Code</i>	<i>Explanation</i>
P	Repair parts, special tools and test equipment supplied from the GSA / DSA, or Army supply systems and authorized for use at indicated maintenance categories.
P2	Repair parts, special tools and test equipment which are procured and stocked for insurance purposes because the combat or military essentiality of the end item dictates that a minimum quantity be available in the supply system.
P9	Assigned to items which are NSA design controlled : unique repair parts, special tools, test, measuring and diagnostic equipment, which are stocked and supplied by the Army COMSEC Logistic System and which are not subject to the provisions of AR 380-4 i.

<i>Code</i>	<i>Explanation</i>
P10	Assigned to items which are NSA design controlled: special tools, test, measuring and diagnostic equipment for COMSEC support, which are accountable under the provisions of AR 380-41, and which are stocked and supplied by the Army COMSEC Logistic System.
M	Repair parts, special tools and test equipment which are not procured or stocked, as such, in the supply system but are to be manufactured at indicated maintenance levels.
A	Assemblies which are not procured or stocked as such, but are made up of two or more units. Such component units carry individual stock numbers and descriptions, are procured and stocked separately and can be assembled to form the required assembly at indicated maintenance categories.
X	Parts and assemblies that are not procured or stocked because the failure rate is normally below that of the applicable end item of component. The failure of such part or assembly should result in retirement of the end item from the supply system.
X1	Repair parts which are not procured or stocked. The requirement for such items will be filled by the next higher assembly or component.
X2	Repair parts, special tools, and test equipment which are not stocked and have no foreseen mortality. The indicated maintenance category requiring such repair parts will attempt to obtain the parts through cannibalization of salvage. The item may be requisitioned with exception data, from the end item manager, for immediate use.
G	Major assemblies that are procured with PERMA funds for initial issue only as exchange assemblies at DSU and GSU level. These assemblies will not be stocked above the DS and GS level or returned to depot supply level.

*Note:* Cannibalization or salvage may be used as a source of supply for any items source coded above except those coded X and aircraft support items as restricted by AR 700-4

(2) *Maintenance code.* Indicates the lowest category of maintenance authorized to install the listed item. Maintenance level codes are:

<i>Code</i>	<i>Explanation</i>
O	organizational maintenance
F	Direct support maintenance
H	General support maintenance
D	Depot maintenance

(3) *Recoverability code.* Indicates whether unserviceable items should be returned for recovery or salvage. Items not coded are nonrecoverable. Recoverability codes are:

<i>Code</i>	<i>Explanation</i>
R	Applied to repair parts, (assemblies and components) special tools and test equipment which are considered economically repairable at direct and general support maintenance levels. When the item is not longer economically repairable, it is normally disposed of at the GS level. When the item is not longer economically repairable, it is normally disposed of at the GS level. When supply considerations dictate, some of these repair parts may be listed for automatic return to supply for depot level repair as set forth in AR 710-50. When so listed, they will be replaced by supply on an exchange basis.
S	Repair parts, special tools, test equipment and assemblies which are economically repairable at DSU and GSU activities and which normally are furnished by supply on an exchange basis. When items are determined by a GSU to be uneconomically repairable, they will be evacuated to a depot for evaluation and analysis before final disposition.
T	Higher dollar value recoverable repair parts, special tools, and test equipment which are subject to special handling and are issued on an exchange basis. Such items will be repaired or overhauled at depot maintenance activities only. No repair may be accomplished at lower levels.
U	Repair parts, special tools and test equipment specifically selected for salvage by reclamation units because of precious metal content, critical materials, high dollar value or reusable casings or castings.

b. *Federal Stock Number.* Indicates the federal stock number assigned to the item and will be used for requisitioning purposes. Items source coded A, M, X1, or X2 are not assigned a federal stock number.

c. *Description.* Indicates the federal item name and any description of the item required. The description column contains the following sub-columns.

- (1) *Reference Number and Manufacturer's Code.* Indicates a part number on other reference number for the listed item followed by the applicable five-digit federal supply code for manufacturers.
- (2) *Usable on Code.* Not applicable.

d. *Unit of Measure (U/M).* A two-character alphabetical abbreviation indicating the amount or quantity of the item upon which the allowances are based e.g., EA, FT, PR.

e. *Quantity Incorporated in Unit.* This column indicates quantities required for one assembly only, including instances when similar assemblies are broken down together. A "V" appearing in this column in lieu of a quantity indicates that a definite quantity cannot be indicated (e.g., shims, spacers) When parts are shown as attaching two or more items, the quantities of these parts are those necessary to attach only one of the items.

f. *Fifteen-Day Organizational Maintenance Allowances.*

- (1) The allowance column is divided into four subcolumns. Indicated in each subcolumn opposite the first appearance of each item is the total quantity of items authorized for the number of equipments supported. Subsequent appearances of the same item will have the letters "REF" in the allowance columns. Items authorized for use as required, but not for initial stockage are identified with an asterisk (\*) in the allowance column.
- (2) The quantitative allowances for organizational level of maintenance represents one initial prescribed load for a 15-day period for the number of equipments supported. Units and organizations authorized additional prescribed loads, will multiply the number of prescribed loads authorized by the quantity of repair parts reflected in the density column applicable to the number of items supported to obtain the total quantity of repair parts authorized.
- (3) Organizational units providing maintenance for more than 100 of these equipments, shall determine the total quantity of repair parts required by converting the equipment quantity to a decimal factor by the parts quantity authorized in the 51-100 allowance column. Example: authorized allowance for 51-100 equipments is 12; for 140 equipments multiply 12 by 1.40 or 16.80 rounded off to 17 parts required.
- (4) Subsequent changes to allowances will be limited as follows. No change in the range of items is authorized. If additional items are considered necessary, recommendations should be forwarded to the Commanding General U.S. Army Aviation Systems Command (USAAVSCOM) P.O. Box 209, St. Louis MO 63166, for exception or revision to the allowance list. Revisions to the range of items authorized will be made by USAAVSCOM based upon engineering experience, demand data or The Army Maintenance Management System (TAMMS) information.

g. *Thirty-Day DS/GS Maintenance Allowances.*

- (1) The allowance column is divided into three subcolumns. Indicated in each subcolumn, opposite the first appearance

of each item, is the total quantity of items authorized for the number of equipments supported. Subsequent appearances of the same item will have the letters "REF" in the applicable allowance columns. Items authorized for use as required, but not for initial stockage are identified with an asterisk (\*) in the allowance column.

- (2) The quantitative allowances for DS / GS levels of maintenance will represent initial stockage for a 30-day period for the number of equipments supported. The basis of issue for authorized special tools, test and support equipment is the number of end items of equipment supported.
- (3) Determination of the total quantity of parts required for maintenance of more than 100 of these equipments, can be accomplished by converting the equipment quantity to a decimal factor by placing a decimal point before the next to last digit of the number to indicate hundredths, and multiplying the decimal factor by the parts quantity authorized in the 51-100 allowance column. Example: authorized allowance for 51-100 equipments is 40; for 150 equipments multiply 40 by 1.50 or 60 parts required.

*h. One Year Allowances for 100 Equipments Contingency Planning Purposes.* When applicable, this column indicates opposite the first appearance of each item the total quantity required for distribution and contingency planning purposes. The range of items indicates the total quantities of all authorized items required to provide adequate support of 100 equipments for 1 year.

*i. Depot Maintenance Allowance Per 100 Equipments.* This column indicates opposite the first appearance of each item, the total quantity authorized for depot maintenance of 100 equipments. Subsequent appearances of the same item will have the letters "REF" in the allowance column. Items authorized for use as required, but not for initial stockage are identified with an asterisk (\*) in the allowance column.

*j. Illustration.* This column is divided as follows:

- (1) *Figure Number.* Indicates the figure number of the illustration in which the item is shown. Appearances of the letters "MS UP" in this column indicates maintenance supplies located in Section V.
- (2) *Item Number.* Indicates the callout number to reference the item in the illustration.

**4. How to Locate Repair Parts.**

*a. When Federal Stock Number or Reference Number is Unknown:*

- (1) *First.* Find the illustration of the assembly or subassembly to which the repair part belongs.
- (2) *Second.* Identify the repair part on the illustration and note the illustration figure and item number of the repair part.
- (3) *Third.* Using the repair parts listing find the figure and item number listed in the illustration column.

*b. When Federal Stock Number or Reference Number is Known:*

- (1) *First.* Using the Index of Federal Stock Numbers and Reference Numbers, find the pertinent federal stock number or reference number. This index is in ascending federal stock number sequence followed by a list of reference numbers in ascending alphanumeric sequence, cross-referenced to the illustration figure and item number.
- (2) *Second.* Using the repair parts listing, find the figure and item number listed in the illustration column referenced in the Index of Federal Stock Numbers and Reference Numbers.

**5. Federal Supply Code for Manufacturers.**

<i>Code</i>	<i>Manufacturer</i>
00624	Aeroquip Corp Aircraft Division Jackson Plant 3005 East Ave Jackson MI 49203
06499	Volta Battery Corp 1000 E 87th St Chicago IL
08645	Briggs and Stratton Corp 27 11 N 13th St Milwaukee WI 53201
15801	Fenwal Electronics Inc 63 Fountain St Framingham MA 01701
16764	Delco Remy Division of General Motors Corp 2401 Columbus Ave Anderson IN 46011
16954	Abex Corp Denison Division 1160 Dubin Road Columbus OH 43216
19782	Bruetsch Machine Products 9607 Traverse Street Detroit MI 48213
21335	Edsyn Inc 1 5954 Arminta St Van Nuys Ca 91406
21387	Fairbanks Morse Inc 1290 Avenue of the Americas New York NY 10019
24161	Gates Rubber Co 999 South Broadway Denver CO 80217
26519	Heco Division Barker-Rockford 3500 W No Ave Melrose Park IL 60160
30839	Orange Research Inc 821 Derby-Milford Road Orange CT 06477
38056	Dresser Industries Inc Dresser-Industrial Valve and Instrument Division 250 E Main St Stratford CT 06497
42689	National Lock Co 1902 7th Rockford IL 6110

<i>Code</i>	<i>Manufacturer</i>
50513	White Motor Corp Diamond Reo Truck Division 133 I S Washington Ave Lansing MI 48920
56289	Sprague Electric Corp North Adams MA 01247
57733	Stewart-W arner Corp 1826 Diversey Parkway Chicago IL 60614
60038	Timken Roller Bearing Co 1835 Dueber Ave S W Canton OH
64467	Weksler Instruments Corp 195 E Merrick Road Freeport Long Island NY 11520
66289	Wisconsin Motor Corp 1910 S 53rd St Milwaukee WI 53219
70485	Atlantic India Rubber Works Inc 571 Polk St Chicago IL 60607
72619	Dialight Corp 60 Stewart Av e Brooklyn NY 11237
72653	G C Electronics Co A Division of Hydrometals Inc 400 S Wayman St Rockford IL 61101
73370	Fram Corp 105 Pawtucket Ave Providence RI 02916
78480	Tillotson Mfg Co 761-69 Berdan Ave Toledo OH 43612
79150	Dana Corp Victor Division P O Box 1333 Chicago IL 60690
81321	Purolator Inc 970 New Brunswick Ave Rahway NJ 07065
81349	Military Specification Promulgated by Stand- ardization Div Directorate of Logistic Services DSA
82796	Fairbanks Morse Inc Fairbanks Morse Power Sy stems Div ision 740 Lawton Ave Beloit WI 53551
86768	Re public Mfg Co 1565 5 Brookpark Road Cleveland OH 44135
88044	Aeronautical Standards Group Dept of N avy and Air Force

<i>Code</i>	<i>Manufacturer</i>
88240	Nielson Tool and Die Co 770 Wethersfield Ave Hartford CT 06101
94135	Naval Ordnance Standards
94222	South Co Inc Lester PA 19113
95026	United Mfg Co 5250 Dobckmn Cleveland OH 44102
95688	Prestolite I Division of Eltra Corp Clay St reet Woodstock IL
96152	Marvel & Schebler Product D ivision of Borg Warner Corp 2195 South Elwin Road Decatur IL 62525
96906	Military Standards Promulgated by Stand- ardization Div Directorate of Logistic Services DSA
97399	Dragon Engineering Co P O Box 489 Norwalk CA 96052
98003	Nielsen Hardware Corp 770 Weatherfield Ave Hartford CT
99879	Aeroquip Corp Aircraft Division Elbeeco Plant 1130 Maynard Rd Jackson MI 49202

**6. Recommendations for Maintenance Publications Improvements.**

Report of errors, omissions, and recommendations for improving this publications by the individual user is encouraged. Reports should be submitted on DA Form 2028 (Recommended Changes to DA Publications) and forwarded direct to the Commanding General, U. S. Army Aviation Systems Command, ATTN : AMSAV-R-MLRA, P.O. Box 209 St Louis MO 63166.



<i>Code</i>	<i>Manufacturer</i>
50513	White Motor Corp Diamond Reo Truck Division 133 I S Washington Ave Lansing MI 48920
56289	Sprague Electric Corp North Adams MA 01247
57733	Stewart-W arner Corp 1826 Diversey Parkway Chicago IL 60614
60038	Timken Roller Bearing Co 1835 Dueber Ave S W Canton OH
64467	Weksler Instruments Corp 195 E Merrick Road Freeport Long Island NY 11520
66289	Wisconsin Motor Corp 1910 S 53rd St Milwaukee WI 53219
70485	Atlantic India Rubber Works Inc 571 Polk St Chicago IL 60607
72619	Dialight Corp 60 Stewart Av e Brooklyn NY 11237
72653	G C Electronics Co A Division of Hydrometals Inc 400 S Wayman St Rockford IL 61101
73370	Fram Corp 105 Pawtucket Ave Providence RI 02916
78480	Tillotson Mfg Co 761-69 Berdan Ave Toledo OH 43612
79150	Dana Corp Victor Division P O Box 1333 Chicago IL 60690
81321	Purolator Inc 970 New Brunswick Ave Rahway NJ 07065
81349	Military Specification Promulgated by Stand- ardization Div Directorate of Logistic Services DSA
82796	Fairbanks Morse Inc Fairbanks Morse Power Sy stems Div ision 740 Lawton Ave Beloit WI 53551
86768	Re public Mfg Co 1565 5 Brookpark Road Cleveland OH 44135
88044	Aeronautical Standards Group Dept of N avy and Air Force

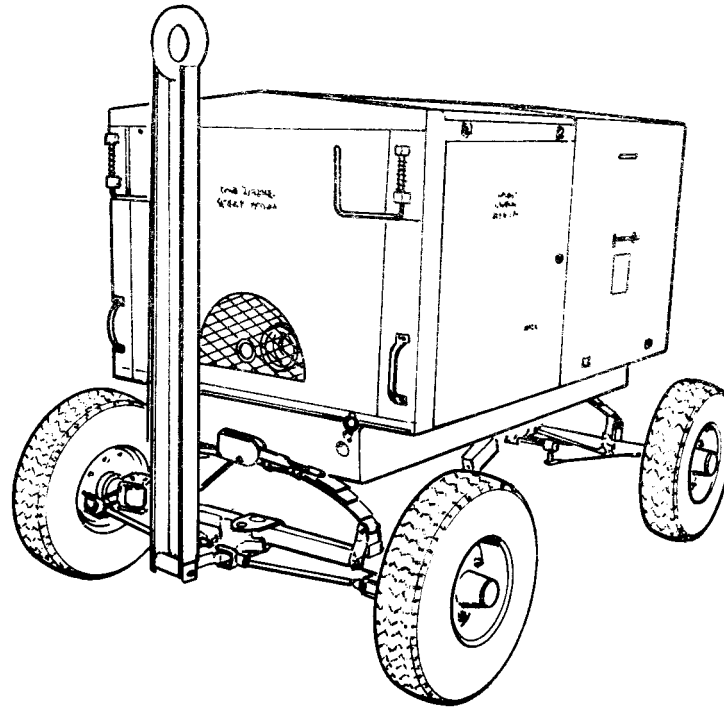
<i>Code</i>	<i>Manufacturer</i>
88240	Nielson Tool and Die Co 770 Wethersfield Ave Hartford CT 06101
94135	Naval Ordnance Standards
94222	South Co Inc Lester PA 19113
95026	United Mfg Co 5250 Dobckmn Cleveland OH 44102
95688	Prestolite I Division of Eltra Corp Clay St reet Woodstock IL
96152	Marvel & Schebler Product D ivision of Borg Warner Corp 2195 South Elwin Road Decatur IL 62525
96906	Military Standards Promulgated by Stand- ardization Div Directorate of Logistic Services DSA
97399	Dragon Engineering Co P O Box 489 Norwalk CA 96052
98003	Nielsen Hardware Corp 770 Weatherfield Ave Hartford CT
99879	Aeroquip Corp Aircraft Division Elbeeco Plant 1130 Maynard Rd Jackson MI 49202

**6. Recommendations for Maintenance Publications Improvements.**

Report of errors, omissions, and recommendations for improving this publications by the individual user is encouraged. Reports should be submitted on DA Form 2028 (Recommended Changes to DA Publications) and forwarded direct to the Commanding General, U. S. Army Aviation Systems Command, ATTN : AMSAV-R-MLRA, P.O. Box 209 St Louis MO 63166.



TM55-4920-335-24P



AV043522

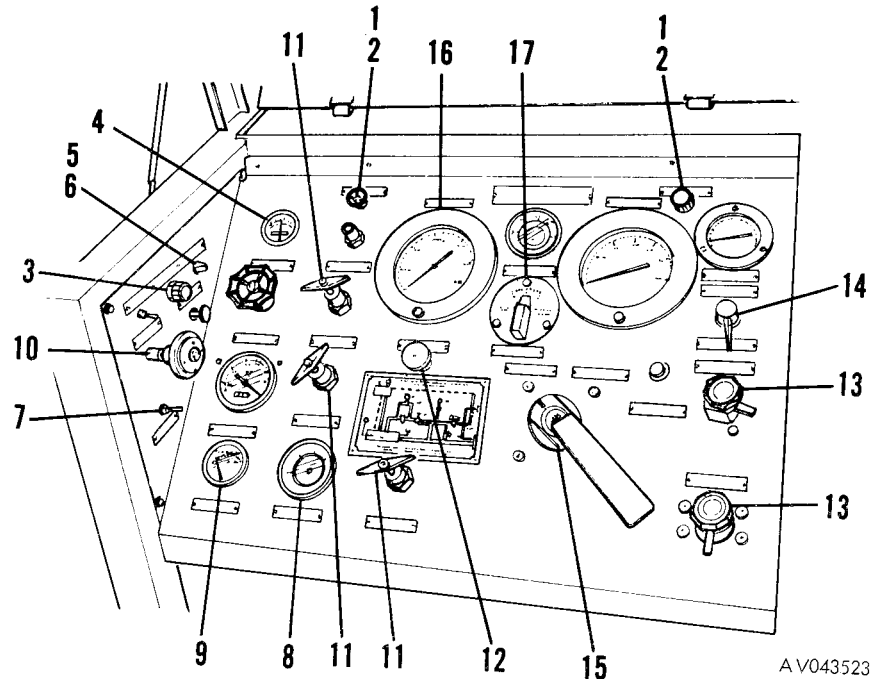
FIG. 1. TEST STAND, HYDRAULIC SYSTEM



SECTION III			TM55-4920-335-24P											
(1)	(2)	(3)					(4)	(5)	(6)				(7)	
SMR	FEDERAL	DESCRIPTION			USABLE	UNIT	QTY	15-DAY ORG				ILLUSTRATION		
CODE	STOCK	REFERENCE NUMBER & MFR CODE			ON	OF	INC	MAINT	ALW	(C)	(D)	(A)	(B)	
	NUMBER				CODE	MEAS	IN	(A)	(B)	21-50	51-100	FIG	ITEM	
						UNIT	1-5	6-20				NO	NO	
LINES AND FITTINGS														
P-O-	4730-561-1544	155S7-12	00624	CAP,DUST,COUPLING,3/4 IN	EA	1	*	*	*	*		9	36	
P-O-	5330-579-3163	MS28775-214	96906	.PACKING,PREFORMED	EA	1	*	*	*	*		9		
P-O-	4730-540-0392	TB155S4-8D	00624	COUPLING HALF,SELF-SEALING,1/2 INC	EA	1	*	*	*	*		9	37	
P-O-	5340-594-7136	155S7-8D	00624	OUTLET										
P-O-	5340-594-7136	155S7-8D	00624	CAP,PROTECTIVE,DUST AND MOISTURE	EA	1	*	*	*	*		9	38	
P-O-	4730-640-1878	145S4-16D	00624	SEAL,1/2 IN										
P-O-	4730-640-1878	145S4-16D	00624	COUPLING HALF,SELF-SEALING,1 IN	EA	1	*	*	*	*		9	39	
P-O-	5340-134-3247	145S7-16D	99879	RETURN										
P-O-	5340-134-3247	145S7-16D	99879	CAP,PROTECTIVE,DUST AND MOISTURE	EA	1	*	*	*	*		9	40	
				SEAL,1 IN.										
GROUP 03														
ENGINE														
OIL FILTER														
		F21P	73370	FILTER,OIL		1						20		
P-O-	5310-282-9555	11581	73370	.WASHER,FLAT	EA	1	*	*	*	*		20	1	
P-O-	5330-599-1285	11582-2	73370	.WASHER,NONMETALLIC	EA	1	*	*	*	*		20	2	
P-O-	2940-141-9025	C21P	73370	.FILTER ELEMENT,FLUID PRESSURE	EA	1	*	*	*	*		20	3	
GROUP 04														
MISCELLANEOUS														
HOUSING ASSEMBLY														
P-O-	5340-847-8287	61-3653CRH	42689	LID SUPPORT	EA	4	*	*	*	*		21	1	
P-O-	5340-847-8286	61-3653CLH	42689	LID SUPPORT	EA	5	*	*	*	*		21	2	

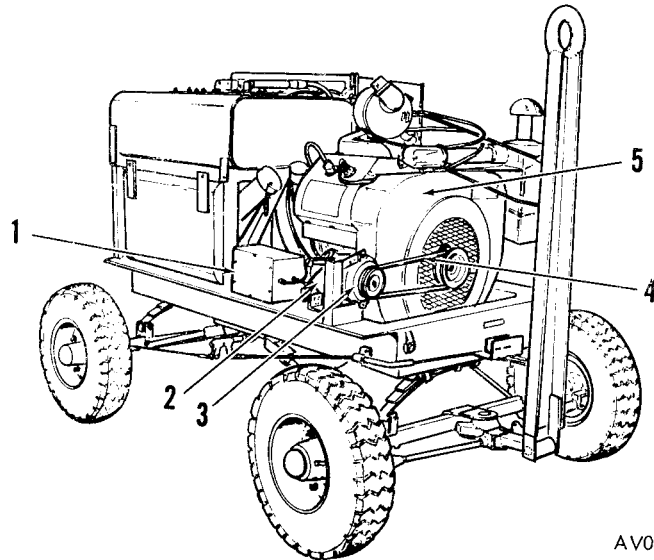


TM55-4920-335-24P



AV043523

FIG. 2. CONTROL PANEL



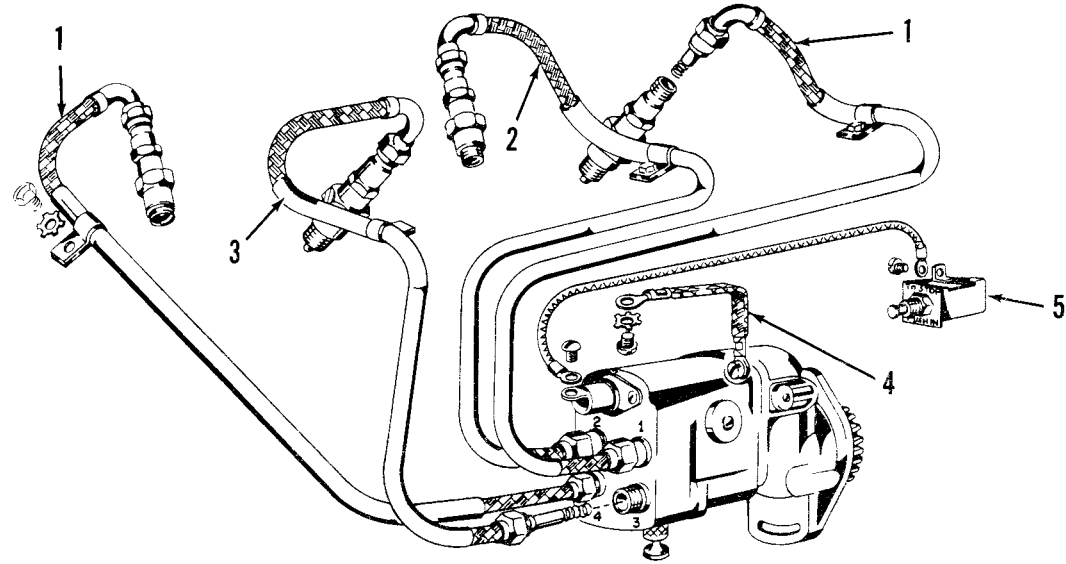
AV043524

FIG. 3. ELECTRICAL ACCESSORIES

SECTION V		TM55-4920-335-24P											
(1)	(2)	(3)			(4)	(5)	(6)			(7)	(8)	(9)	
SMR	FEDERAL	DESCRIPTION	USABLE	UNIT	QTY	30-DAY	DS/GS		1-YR	DEPOT	ILLUSTRATION		
CODE	STOCK	REFERENCE NUMBER & MFR CODE	ON	OF	INC	MAINT	ALW		ALW PER	MAINT	(A)	(B)	(B)
	NUMBER		CODE	MEAS	IN	(A)	(B)	(C)	EQUIP	100	FIG	ITEM	
					UNIT	1-20	21-50	51-100	EQUIP	100	NO	NO	
SECTION V													
REPAIR PARTS													
GROUP 01													
ELECTRICAL SYSTEM													
CONTROL PANEL													
P--F--	6210-803-9882	MS25331-9	96906	LIGHT, INDICATOR	EA	2	*	*	*	*	2	1	
P--F--	6240-155-7967	60E7360	72619	.LAMP, INCANDESCENT	EA	2	*	*	*	*	2	2	
P--F--	5930-274-5124	CY10C	66289	SWITCH, PUSH	EA	1	*	*	*	*	2	3	
P--F--	6625-420-8623	YE2	66289	AMMETER	EA	1	*	*	*	*	2	4	
P--O--	5920-548-3126	F02A250V6A	81349	FUSE, CARTRIDGE	EA	1	*	*	*	*	2	5	
P--F--	5920-892-3111	FHN26G1	81349	FUSE HOLDER	EA	1	*	*	*	*	2	6	
P--F--	5930-251-7595	2366	72653	SWITCH, TOGGLE	EA	1	*	*	*	*	2	7	
P--F--	6680-247-3273	616B12V	57733	GAGE, LIQUID LEVEL	EA	1	*	*	*	*	2	8	
P--F--	6620-698-6700	RS11C	66289	GAGE, OIL	EA	1	*	*	*	*	2	9	
P--F--	6680-702-9661	RS50C	66289	TACHOMETER	EA	1	*	*	*	*	2	10	
ELECTRICAL ACCESSORIES													
P--F--	6110-463-5007	673032	26519	VOLTAGE REGULATOR BOX	EA	1	*	*	*	*	3	1	
P--O--	5910-538-3232	48P18	56289	.CAPACITOR, FIXED, PAPER DIELECTRIC	EA	3	*	*	*	*	3		
P--F--	2920-105-2571	1119257	16764	.REGULATOR, VOLTAGE	EA	2	*	*	*	*	3		
P--F--	2920-221-8899	1102343	16764	GENERATOR, ENGINE	EA	1	*	*	*	*	3	2	
P--F--	2920-289-7903	1921091	16764	PULLEY, GROOVE	EA	1	*	*	*	*	3	3	
P--O--		QS24S	06499	BATTERY, 12V	EA	1	*	*	*	*	3		
P--O--		51410	24161	BELT, V	EA	1	*	*	*	*	3	4	
P--F--	2920-925-1417	MBG4116T	19728	STARTER, ENGINE	EA	1	*	*	*	*	3		
P--H--	2920-547-4335	EBB44B	95688	.DRIVE, STARTER	EA	1	*	*	*	*	3		
P--F--	5930-134-5720	01-18021-0	15801	SWITCH, THERMOSTATIC, HYDRAULIC	EA	1	*	*	*	*	3		
P--F--	5930-775-7577	YC66DS1	66289	MANIFOLD SWITCH, THERMOSTATIC, ENGINE HIGH TEMP	EA	1	*	*	*	*	3		

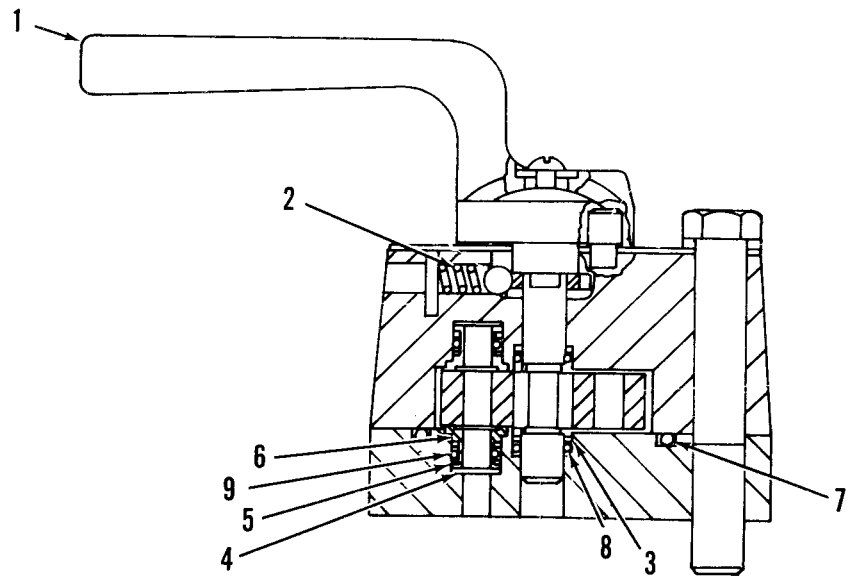


TM55-4920-335-24P



AV043525

FIG. 4. IGNITION CABLES

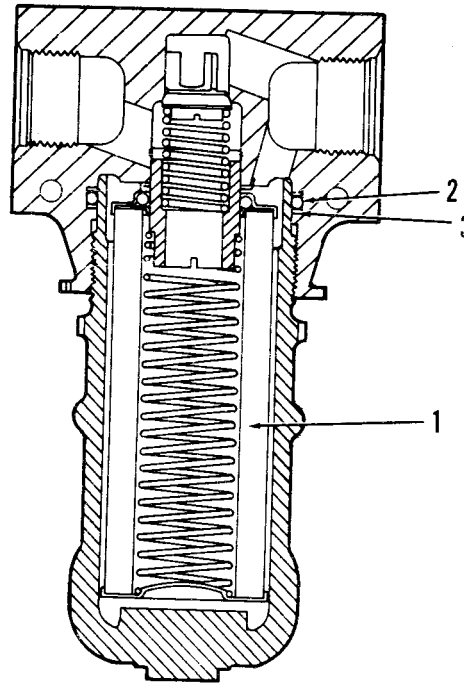


AV043526

FIG. 5. ROTARY VALVE

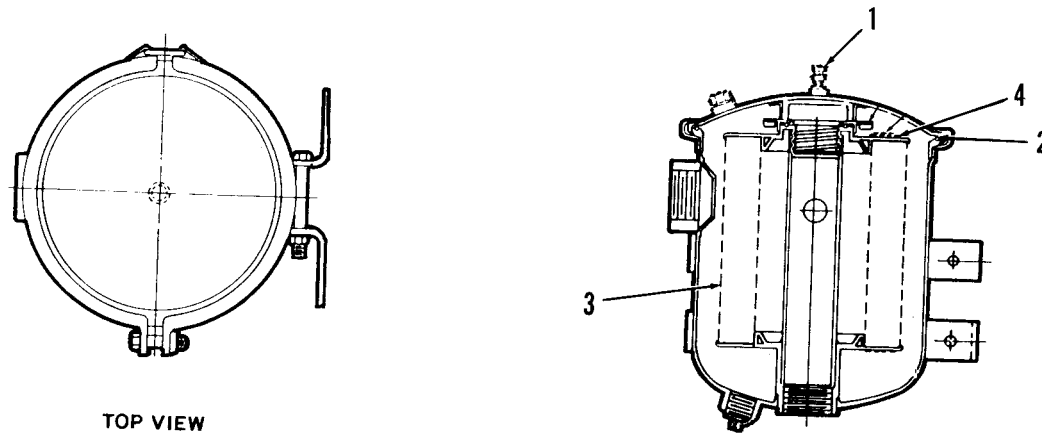
SECTION V		TM55-4920-335-24P				(4)	(5)	(6)			(7)	(8)	(9)	
(1)	(2)	(3)						30-DAY DS/GS			1-YR	DEPOT	ILLUSTRATION	
SMR	FEDERAL	DESCRIPTION			USABLE	UNIT	QTY	MAINT ALW			ALW PER	MAINT	(A)	(B)
CODE	STOCK	REFERENCE NUMBER & MFR CODE			ON	OF	INC	(A)	(B)	(C)	100	100	FIG	ITEM
	NUMBER				CODE	MEAS	IN	1-20	21-50	51-100	EQUIP	EQUIP	NO	NO
IGNITION CABLES														
P--F--	2920-941-6108	MS51011-13	96906	LEAD AND CONDUIT ASSEMBLY	EA	2	*	*	*		*		4	1
P--F--	2920-924-2042	MS51011-14	96906	LEAD AND CONDUIT ASSEMBLY	EA	1	*	*	*		*		4	2
P--F--	2920-887-1289	MS51011-10	96906	LEAD AND CONDUIT ASSEMBLY	EA	1	*	*	*		*		4	3
X2-F--		YL355-5	66289	LEAD, ELECTRICAL	EA	1							4	4
P--F--	5930-224-5668	YC9FS1	66289	SWITCH, PUSH, GROUND	EA	1	*	*	*		*		4	5
GROUP 02 HYDRAULIC SYSTEM														
CONTROL PANEL														
P--F--	4820-247-3233	P10M014T	97399	VALVE, NEEDLE	EA	3	*	*	*		*		2	11
P--F--	4820-254-5853	RIV12-545	16954	VALVE, RELIEF	EA	1	*	*	*		*		2	12
P--F--	4730-042-8988	MS49005-4	96906	. PLUG, PIPE	EA	2	*	*	*		*		2	
P--H--	5330-576-8377	671-00012	16954	. PACKING, PREFORMED	EA	1	*	*	*		*		2	
P--F-R	4820-241-4408	3310-1	26519	VALVE, FLOW CONTROL	EA	2	*	*	*		*		2	13
P--F--	4920-714-5622	118HD1-4	30327	COCK, PLUG, THREEWAY	EA	1	*	*	*		*		2	14
P--F--	4820-234-6242	3300-4	26519	VALVE, ROTARY, SEE FIG.5 FOR BREAKDOWN	EA	1	*	*	*		*		2	15
P--F--	6685-585-4511	AA34-6PWRW	64467	GAGE, PRESSURE	EA	1	*	*	*		*		2	16
P--F--	6680-247-3272	900-1	26519	FLOW INDICATOR	EA	1	*	*	*		*		2	17
ROTARY VALVE														
P--F--	4820-234-6242	3300-4	26519	VALVE, ROTARY	EA	1	*	*	*		*		5	
X2-F--		12-556-17	86768	. HANDLE, VALVE	EA	1							5	1
P--F--	4829-922-8365	10-2864-7	86768	. SPRING, HELICAL, COMPRESSION	EA	1	*	*	*		*		5	2
P--F--	5330-860-1439	12-556-51	86768	. RING	EA	2	*	*	*		*		5	3
P--F--	5340-324-8619	3-2054-1	86768	. SPRING, HELICAL, COMPRESSION	EA	8	*	*	*		*		5	4
P--F--	5330-978-2831	SP201-95	86768	. RING, BACKUP	EA	16	*	*	*		*		5	5
P--F--	5330-978-2828	12-1455-60-1	86768	. SEAL	EA	8	*	*	*		*		5	6
P--F--	5330-020-3053	SP100-154	86768	. PACKING, PREFORMED	EA	1	*	*	*		*		5	7
P--F--	5330-248-3844	MS29513-113	96906	. PACKING, PREFORMED	EA	2	*	*	*		*		5	8
P--F--	5330-455-2718	SP100-95	86768	. PACKING, PREFORMED	EA	8	*	*	*		*		5	9

TM55-4920-335-24P



AV043527

FIG. 6. HIGH PRESSURE FILTER

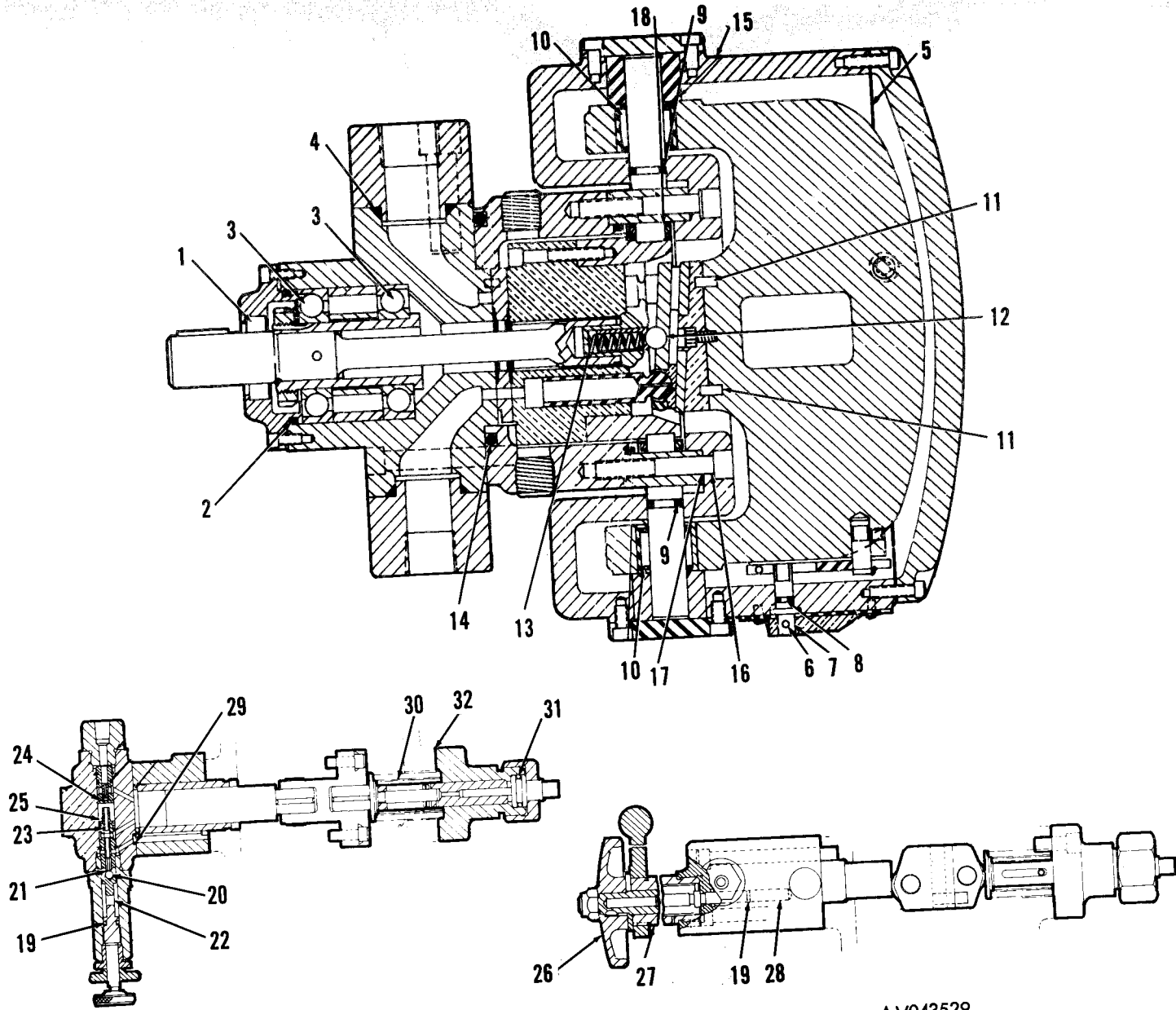


TOP VIEW

AV043528

FIG. 7. LOW PRESSURE FILTER

TM 55-4920-335-24P

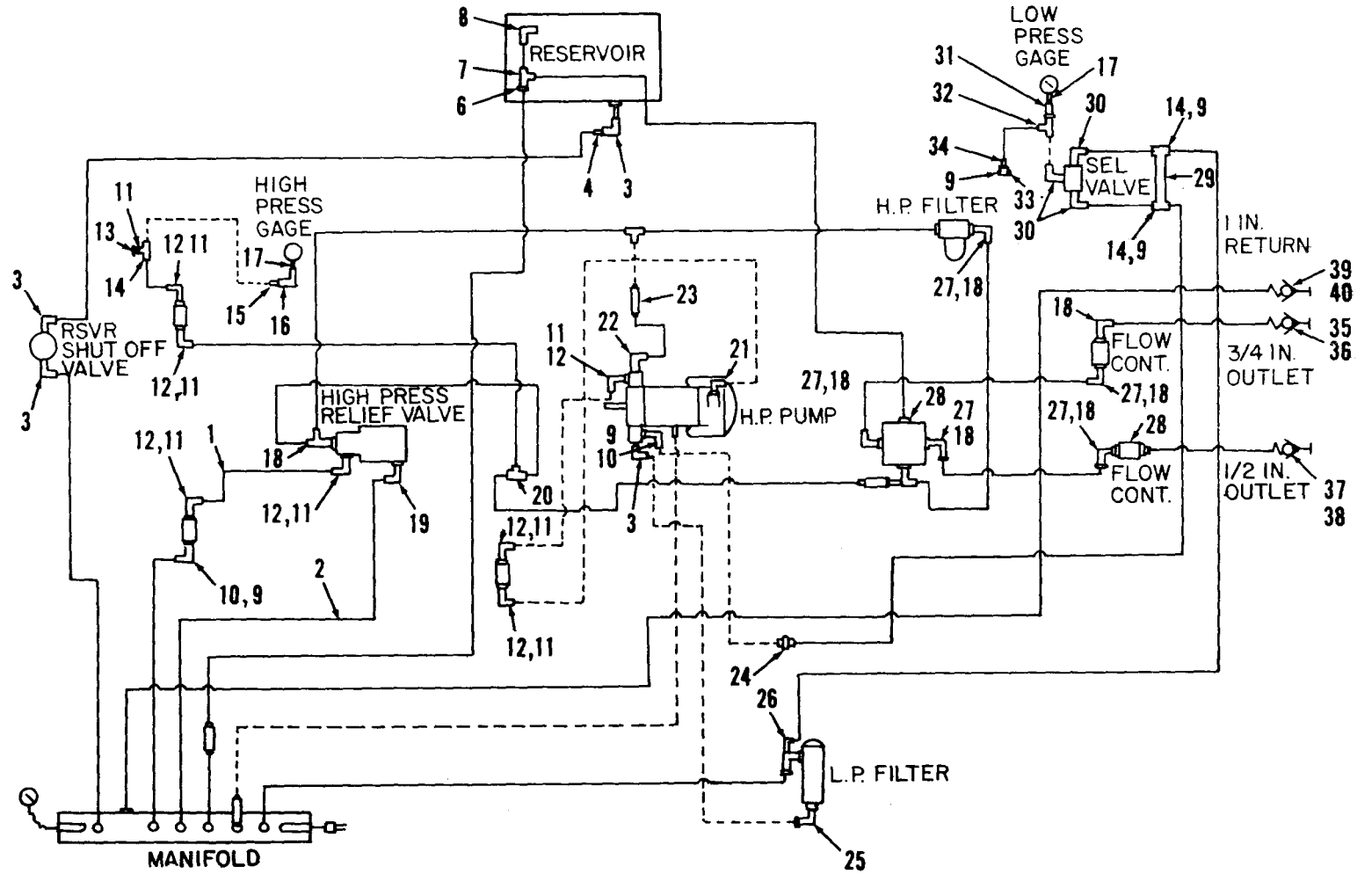


AV043529

FIG 8. HIGH PRESSURE PUMP

SECTION V		TM55-4920-335-24P			(4)	(5)	(6)			(7)	(8)	(9)		
(1)	(2)	(3)	DESCRIPTION		USABLE	UNIT	QTY	30-DAY DS/GS			1-YR	DEPOT	ILLUSTRATION	
SMR	FEDERAL				ON	OF	INC	MAINT ALW			ALW PER	MAINT	(A)	(B)
CODE	STOCK	REFERENCE NUMBER & MFR CODE			CODE	MEAS	IN	(A)	(B)	(C)	100	100	FIG	ITEM
	NUMBER						UNIT	1-20	21-50	51-100	EQUIP	EQUIP	NO	NO
HIGH PRESSURE FILTER														
P--O--	4330-288-6907	MS28720-12	96906	FILTER, FLUID PRESSURE	EA	1	*	*	*		*		6	
P--F--	4330-277-3274	AN6235-4A	88044	.FILTER ELEMENT	EA	1	*	*	*		*		6	1
P--F--	5330-260-9338	AN6230-5	88044	.PACKING, PREFORMED	EA	1	*	*	*		*		6	2
P--F--	5330-186-4938	AN6244-5	88044	.WASHER, NONMETALLIC	EA	2	*	*	*		*		6	3
LOW PRESSURE FILTER														
P--O--	4330-016-1131	P32-54	81321	FILTER, FLUID PRESSURE	EA	1	*	*	*		*		7	
P--F--	2910-424-7431	15002	81321	.BLEEDER VALVE	EA	1	*	*	*		*		7	1
P--F--	2910-986-4204	60430	81321	.GASKET	EA	1	*	*	*		*		7	2
P--F--	4330-804-1541	AN6236-3	88044	.FILTER ELEMENT	EA	1	*	*	*		*		7	3
P--F--	5310-196-6695	AN6238-1	88044	.WASHER, FLAT	EA	2	*	*	*		*		7	4
HIGH PRESSURE PUMP														
		3000-03	26519	PUMP, HIGH PRESSURE		1								8
P--H--	5330-734-8716	623-09971	16954	.SEAL, PLAIN	EA	1	*	*	*		*		8	1
P--H--	5330-987-9305	671-00230	16954	.PACKING, PREFORMED	EA	1	*	*	*		*		8	2
P--H--	3110-769-5994	230-20207	16954	.BEARING, BALL, ANNULAR	EA	2	*	*	*		*		8	3
P--H--	5330-987-9304	671-00220	16954	.PACKING, PREFORMED	EA	1	*	*	*		*		8	4
P--H--	4320-631-4045	035-18064	16954	.GASKET	EA	1	*	*	*		*		8	5
X2-H--		323-10812	16954	.PIN, GROOVED, HEADLESS	EA	1							8	6
P--F--	4320-932-1006	035-13000	16954	.SHAFT, INDICATOR	EA	1	*	*	*		*		8	7
P--H--	5330-256-9661	671-00010	16954	.PACKING, PREFORMED	EA	1	*	*	*		*		8	8
P--H--	5330-973-4292	671-00113	16954	.PACKING, PREFORMED	EA	2	*	*	*		*		8	9
P--F--	3110-227-3237	MS51961-3	96906	.BEARING, ROLLER, NEEDLE	EA	2	*	*	*		*		8	10
X2-H--		324-21608	16954	.PIN	EA	2							8	11
P--H--	3110-100-6158	MS19059-57	96906	.BALL, BEARING	EA	1	*	*	*		*		8	12
P--H--	4920-652-6977	035-18530	16954	.SPRING, HOLD DOWN	EA	1	*	*	*		*		8	13
P--H--	5330-973-4313	671-00241	16954	.PACKING, PREFORMED	EA	1	*	*	*		*		8	14
X2-H--		035-15023	16954	.GASKET	EA	2							8	15
P--H--	5330-987-9123	035-22731	16954	.GASKET	EA	2	*	*	*		*		8	16
P--H--	5330-987-9122	035-11900	16954	.GASKET	EA	1	*	*	*		*		8	17
P--H--	4320-631-1645	035-12421	16954	.BEARING, BARREL	EA	1	*	*	*		*		8	18
		SD99768X	16954	.COMPENSATOR		1							8	
P--H--	5330-576-8377	671-00012	16954	.PACKING, PREFORMED	EA	4	*	*	*		*		8	19
P--H--	3110-100-6151	201-08001	16954	.BALL, BEARING	EA	1	*	*	*		*		8	20
P--F--	4920-324-1756	035-13973	16954	.PISTON, CONTROL	EA	1	*	*	*		*		8	21
P--F--	4320-779-0200	035-12289	16954	.SPRING, HELICAL, COMPRESSION	EA	2	*	*	*		*		8	22





AV043530

FIG. 9. LINES AND FITTINGS

SECTION V						(4)	(5)	(6)			(7)	(8)	(9)	
(1)	(2)	(3)				UNIT	QTY	30-DAY DS/GS			1-YR	DEPOT	ILLUSTRATION	
SMR	FEDERAL	DESCRIPTION			USABLE	OF	INC	MAINT ALW			ALW PER	MAINT	(A)	(B)
CODE	STOCK	REFERENCE NUMBER & MFR CODE			ON	MEAS	IN	(A)	(B)	(C)	100	100	FIG	ITEM
	NUMBER				CODE		UNIT	1-20	21-50	51-100	EQUIP	EQUIP	NO	NO
P--D--	4320-650-9237	035-13976	16954	..RETAINER,SPRING	EA	1					*		8	23
P--D--	4320-650-9236	035-13977	16954	..PISTON,PRESSURE	EA	1					*		8	24
P--D--	4320-712-4639	035-22051	16954	..SPRING,COMPRESSION	EA	1					*		8	25
X2-H--		035-14007	16954	..HANDWHEEL	EA	1							8	26
P--H--	4920-960-1104	035-18001	16954	..SCREW,ADJUSTING	EA	1	*	*	*		*		8	27
X2-H--		035-17914	16954	..STOP,CONTROL	EA	1							8	28
P--F--	5330-584-2278	671-00008	16954	..PACKING,PREFORMED	EA	1	*	*	*		*		8	29
P--D--	5340-977-2405	035-22404	16954	..SPRING,HELICAL,COMPRESSION	EA	1					*		8	30
P--H--	5330-865-9741	671-00210	16954	..PACKING,PREFORMED	EA	1	*	*	*		*		8	31
P--D--	5330-085-5141	035-12592	16954	..GASKET	EA	2					*		8	32
P--H--	3010-552-2148	672068	26519	COUPLING,HYDRAULIC,PUMP TO ENGINE	EA	1	*	*	*		*		8	
LINES AND FITTINGS														
P--F--	4710-150-6062	672093	26519	TUBE ASSEMBLY,METAL	EA	1	*	*	*		*		9	1
P--F--	4710-150-6063	672095	26519	TUBE ASSEMBLY,METAL	EA	1	*	*	*		*		9	2
P--F--	4730-287-1025	MS20822-16D	96906	ELBOW,PIPE TO TUBE	EA	3	*	*	*		*		9	3
P--F--	4730-186-9492	AN816-16D	88044	ADAPTER,STRAIGHT,PIPE TO TUBE	EA	1	*	*	*		*		9	4
P--F--	4730-187-1396	AN916-8D	88044	ELBOW,PIPE	EA	1	*	*	*		*		9	5
P--F--	4730-802-9319	MS24398D12-8	96906	BUSHING,MACHINE	EA	1	*	*	*		*		9	6
P--F--	4730-722-8599	MS24402D12	96906	TEE,TUBE	EA	1	*	*	*		*		9	7
P--F--	4730-287-1027	MS20822-12D	96906	ELBOW,PIPE TO TUBE	EA	1	*	*	*		*		9	8
P--F--	5310-282-7823	MS24400D4	96906	NUT,PLAIN,HEXAGON	EA	5	*	*	*		*		9	9
P--F--	4730-725-4351	MS24394D4	96906	ELBOW,TUBE	EA	2	*	*	*		*		9	10
P--F--	5310-208-5769	AN924-4	88044	NUT,PLAIN,HEXAGON	EA	8	*	*	*		*		9	11
P--F--	4730-231-3026	AN833-4	88044	ELBOW,TUBE	EA	7	*	*	*		*		9	12
P--F--	4730-278-5006	AN929-4	88044	CAP,TUBE	EA	1	*	*	*		*		9	13
P--F--	4730-684-6903	MS24395D4	96906	TEE,TUBE	EA	3	*	*	*		*		9	14
P--F--	4730-187-0840	AN816-4	88044	ADAPTER,STRAIGHT,PIPE TO TUBE	EA	1	*	*	*		*		9	15
P--F--	4730-231-5622	AN916-2	88044	ELBOW,PIPE	EA	1	*	*	*		*		9	16
P--F--	6685-324-1667	25-1106D	38056	DAMPENER,FLUID PRESSURE	EA	2	*	*	*		*		9	17
P--F--	5310-282-7831	MS24400-12	96906	NUT,PLAIN,HEXAGON	EA	8	*	*	*		*		9	18
P--F--	4730-722-7216	MS24394D16	96906	ELBOW,TUBE	EA	1	*	*	*		*		9	19
P--F--	4730-804-1923	MS24402-4	96906	TEE,TUBE	EA	1	*	*	*		*		9	20
P--F--	4730-231-4009	MS20822-4	96906	ELBOW,PIPE	EA	1	*	*	*		*		9	21
P--F--	4730-231-3017	MS20822-12	96906	ELBOW,PIPE TO TUBE	EA	1	*	*	*		*		9	22
P--F--	4820-236-6341	458-12S2-24	86768	VALVE,CHECK	EA	1	*	*	*		*		9	23
P--F--	4730-925-4752	AN815-4D	88044	NIPPLE,TUBE	EA	1	*	*	*		*		9	24
P--F--	4730-287-1022	MS20822-20D	96906	ELBOW,PIPE TO TUBE	EA	1	*	*	*		*		9	25
X2-F--	4730-186-9961	MS20822-4D	96906	ELBOW,PIPE TO TUBE	EA	1	*	*	*		*		9	26
P--F--	5930-134-5722	1202PS	30839	SWITCH,PRESSURE	EA	1	*	*	*		*		9	
P--F--	4730-231-3031	AN833-12	88044	ELBOW,TUBE	EA	6	*	*	*		*		9	27
P--F--	4730-187-0489	AN815-12	88044	NIPPLE,TUBE	EA	3	*	*	*		*		9	28
P--F--	4730-684-6903	MS24395D4	96906	TEE,TUBE	EA	3	*	*	*		*		9	
P--F--	5930-134-5721	1201PS	30839	SWITCH,PRESSURE	EA	1	*	*	*		*		9	29
P--F--	4730-186-9961	MS20822-4D	96906	ELBOW,PIPE TO TUBE	EA	3	*	*	*		*		9	30
P--F--	4730-278-2682	AN910-2D	88044	COUPLING,PIPE	EA	1	*	*	*		*		9	31



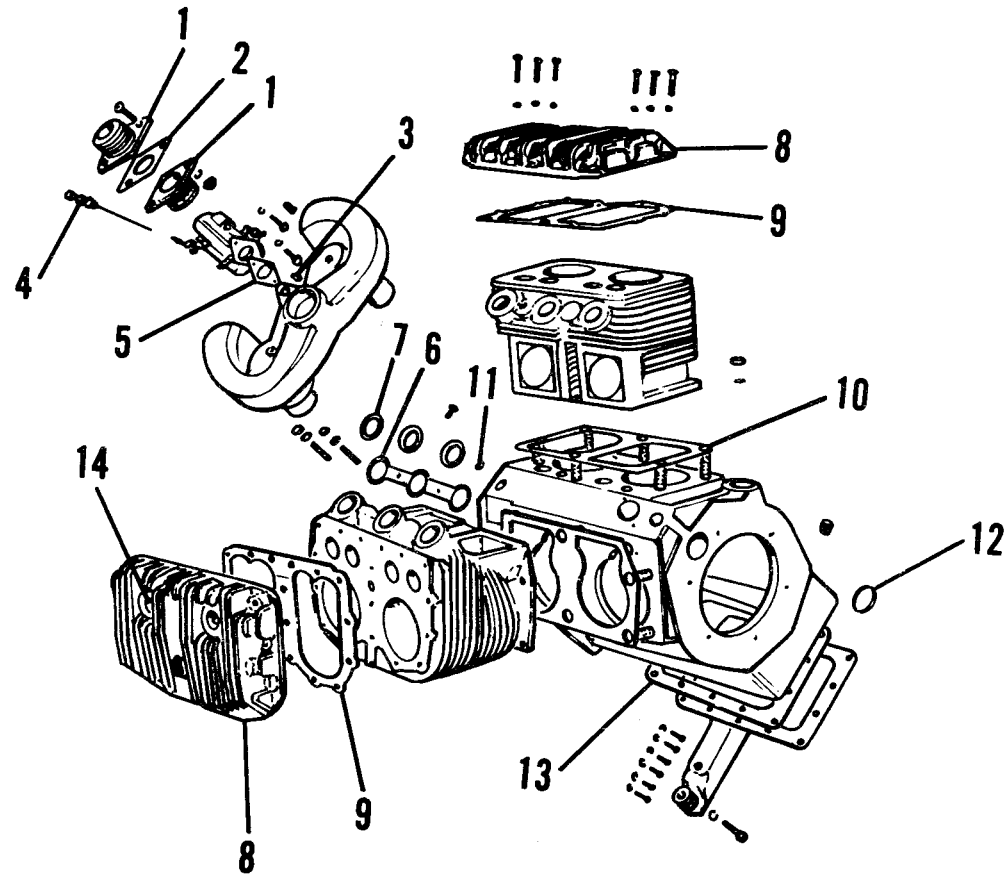
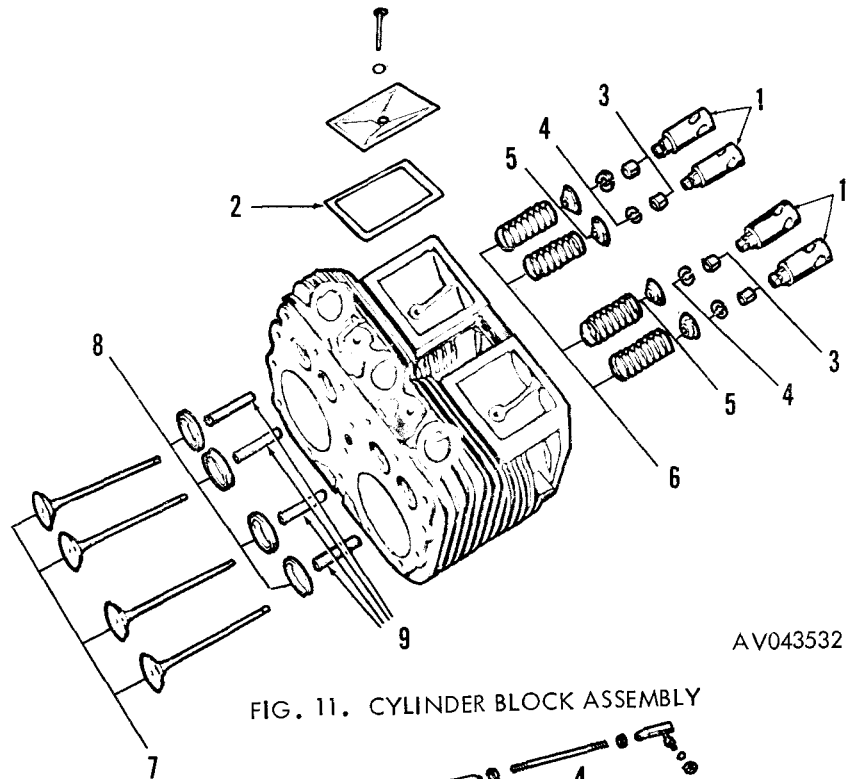


FIG. 10. MANIFOLD AND CRANKCASE

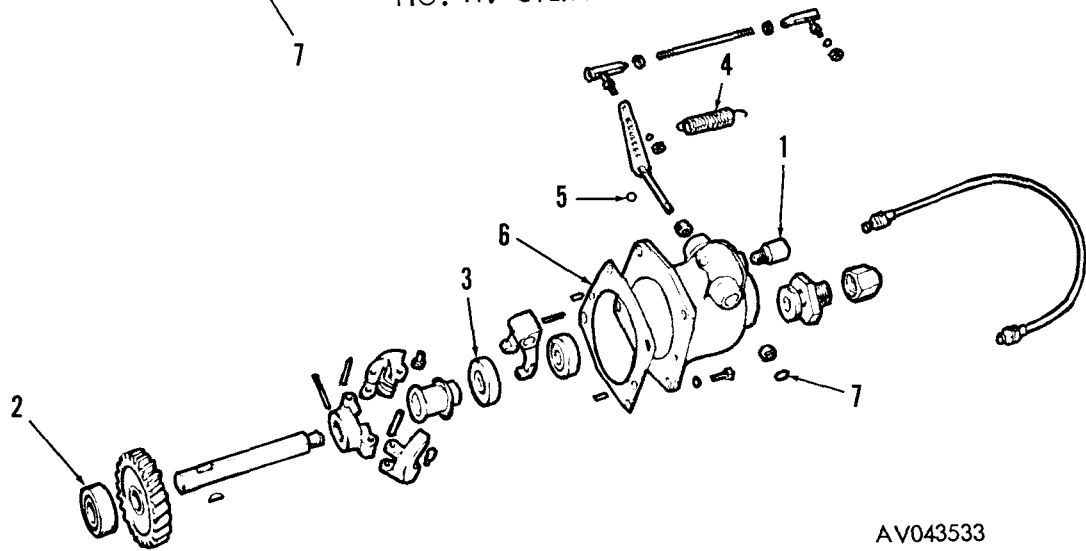
SECTION V		TM55-4920-335-24P				(4)	(5)	(6)			(7)	(8)	(9)	
(1)	(2)	(3)				UNIT	QTY	30-DAY	DS/GS		1-YR	DEPOT	ILLUSTRATION	
SMR	FEDERAL	DESCRIPTION			USABLE	OF	INC	MAINT	ALW	(C)	ALW PER	MAINT	(A)	(B)
CODE	STOCK	REFERENCE NUMBER & MFR CODE			ON	MEAS	IN				100	100	FIG	ITEM
	NUMBER				CODE		UNIT	(A)	(B)	(C)	EQUIP	EQUIP	NO	NO
								1-20	21-50	51-100	CNTGCY			
X2-F--		AN826-4D	88044	TEE,PIPE TO TUBE	EA		1						9	32
P--F--	4730-711-4411	AN929-4D	88044	CAP ASSEMBLY	EA		1	*	*	*		*	9	33
P--F--	4730-715-0018	MS24393D4	96906	NIPPLE,TUBE	EA		1	*	*	*		*	9	34
P--F--	4730-541-1115	TA155S4-12D	00624	COUPLING HALF,QUICK DISCONNECT, 3/4 IN.,OUTLET	EA		1	*	*	*		*	9	35
P--O--	4730-561-1544	155S7-12	00624	CAP,DUST,COUPLING,3/4 IN	EA		1	*	*	*		*	9	36
P--O--	5330-579-3163	MS28775-214	96906	.PACKING,PREFORMED	EA		1	*	*	*		*	9	
P--O--	4730-540-0392	TB155S4-8D	00624	COUPLING HALF,SELF--SEALING,1/2 IN., OUTLET	EA		1	*	*	*		*	9	37
P--O--	5340-594-7136	155S7-8D	00624	CAP,PROTECTIVE,DUST AND MOISTURE SEAL,1/2 IN.	EA		1	*	*	*		*	9	38
P--O--	4730-640-1878	14554-16D	00624	COUPLING HALF,SELF--SEALING, 1 IN., RETURN	EA		1	*	*	*		*	9	39
P--O--	5340-134-3247	145S7-16D	99879	CAP,PROTECTIVE,DUST AND MOISTURE SEAL, 1 IN.	EA		1	*	*	*		*	9	40
				GROUP 03 ENGINE										
P--H--	2805-221-8898	MVG4D303059	66289	ENGINE,GASOLINE,36 HP	EA		1	*	*	*		*	3	5
				MANIFOLD AND CRANKCASE										
X2-F--		LF131	66289	FLANGE,PIPE	EA		2						10	1
P--F--	5330-624-9938	QD727	66289	GASKET	EA		1	*	*	*		*	10	2
P--F--	2990-993-0497	WD50A	66289	MUFFLER,EXHAUST	EA		1	*	*	*		*	10	
X2-F--		XK1	66289	PLUG,PIPE	EA		1						10	3
X2-F--		VE435M	66289	CONTROL ASSEMBLY,CHOKE	EA		1						10	4
P--F--	2805-624-9940	QF91	66289	GASKET	EA		1	*	*	*		*	10	5
P--H--	5330-399-6982	QC62	66289	GASKET	EA		2	*	*	*		*	10	6
P--H--	5330-292-3984	QB83	66289	RETAINER,PACKING	EA		6	*	*	*		*	10	7
X2-F--		AB97B2S1	66289	CYLINDER HEAD	EA		2						10	8
P--F--	2805-399-6984	QD631	66289	GASKET	EA		2	*	*	*		*	10	9
P--F--	2805-428-2159	QD632	66289	GASKET	EA		2	*	*	*		*	10	10
P--F--	5340-050-1591	MS35648-4	96906	PLUG,EXPANSION	EA		2	*	*	*		*	10	11
X2-F--		SA58	66289	PLUG,EXPANSION	EA		1						10	12
P--H--	5330-428-2162	QD635	66289	GASKET	EA		1	*	*	*		*	10	13
P--F--	2920-810-7082	MS51009-1	96906	SPARK PLUG	EA		4	*	*	*		*	10	14

TM 55-4920-335-24P



AV043532

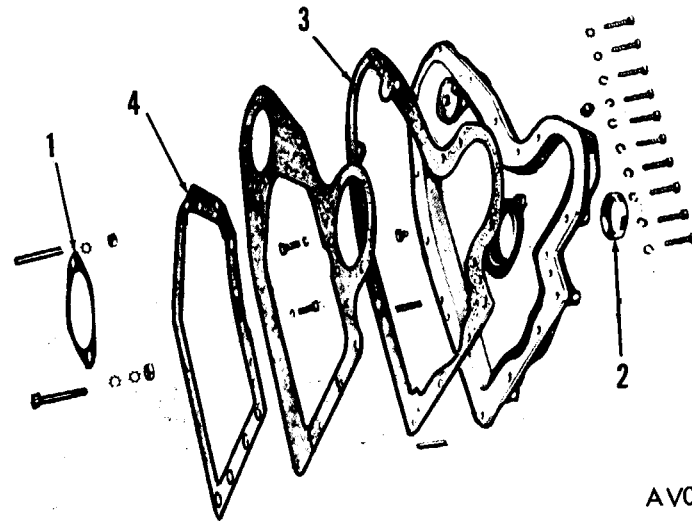
FIG. 11. CYLINDER BLOCK ASSEMBLY



AV043533

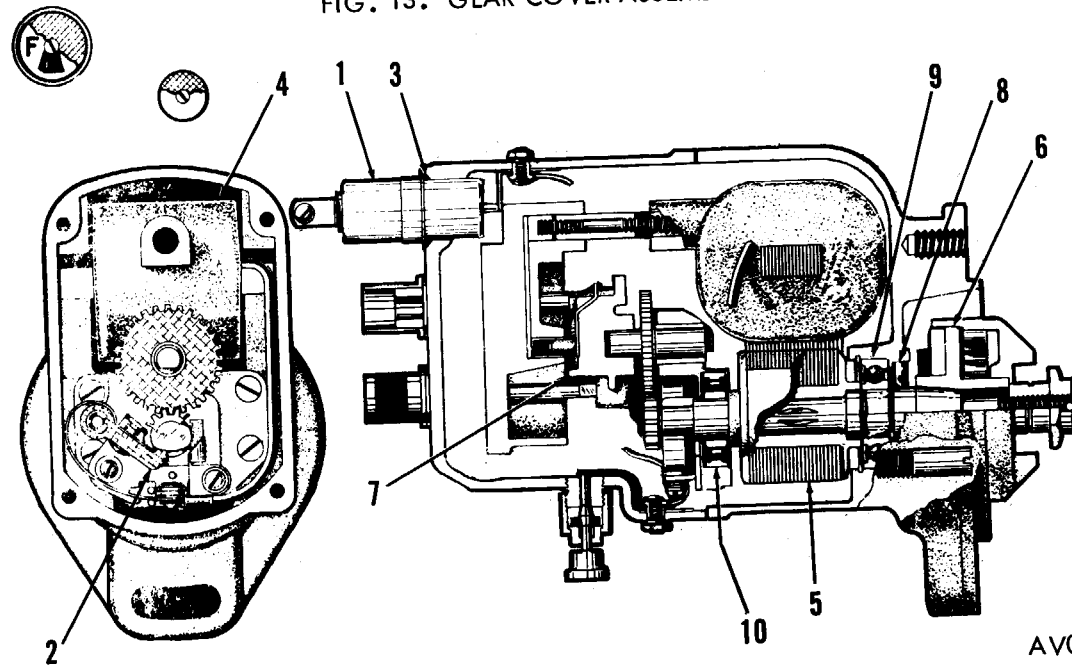
FIG. 12. GOVERNOR ASSEMBLY

SECTION V		TM55-4920-335-24P				(4)	(5)	(6)			(7)	(8)	(9)	
(1)	(2)	(3)						30-DAY DS/GS			1-YR	DEPOT	ILLUSTRATION	
SMR	FEDERAL	DESCRIPTION			USABLE	UNIT	QTY	MAINT	ALW	(C)	ALW PER	MAINT	(A)	(B)
CODE	STOCK	REFERENCE NUMBER & MFR CODE			ON	OF	INC				100	100	FIG	ITEM
	NUMBER				CODE	MEAS	IN	(A)	(B)	(C)	EQUIP	EQUIP	NO	NO
								1-20	21-50	51-100	CNTGCT			
CYLINDER BLOCK ASSEMBLY														
X2-F--		AA90A2S1	66289	CYLINDER BLOCK ASSEMBLY	EA	1							11	
P--H--	2805-624-9949	F65	66289	.TAPPET,ENGINE POPPET VALVE	EA	8	*	*	*		*		11	1
P--H--	2805-536-8804	QD482	66289	.GASKET	EA	4	*	*	*		*		11	2
P--H--	2805-374-9746	MS13998-1	96906	.CAP,VALVE STEM	EA	8	*	*	*		*		11	3
P--F--	2805-528-6097	MS13997-1	96906	.LOCK,VALVE SPRING RETAINER	EA	16	*	*	*		*		11	4
P--F--	2805-339-5589	AG30	66289	.SEAT,VALVE SPRING	EA	8	*	*	*		*		11	5
P--F--	2805-505-5191	AF49A	66289	.SPRING,HELICAL, COMPRESSION	EA	8	*	*	*		*		11	6
P--H--	2805-882-8033	MS13999-8	96906	.VALVE,POPPET,ENGINE	EA	8	*	*	*		*		11	7
P--F--	2805-424-2806	HG150D	66289	.SEAT,VALVE	EA	8	*	*	*		*		11	8
P--H--	2805-574-8856	AD42A	66289	.GUIDE,VALVE	EA	8	*	*	*		*		11	9
P--H--	2805-968-1793	Q27	66289	GASKET SET,VALVE GRINDING	EA	V	*	*	*		*		11	
GOVERNOR ASSEMBLY														
X2-F--		777D	57733	ADAPTER,TACHOMETER	EA	1							12	1
P--H--	2990-624-9956	T84H1	66289	GOVERNOR,GASOLINE ENGINE	EA	1	*	*	*		*		12	
X2-F--		TA112AS1	66289	.SHAFT ASSEMBLY,GROOVED	EA	1							12	
P--H--	3110-117-0587	ME112	66289	.BEARING,BALL,ANNULAR	EA	1	*	*	*		*		12	2
P--F--	3110-117-0575	ME111	66289	.BEARING,BALL,ANNULAR	EA	1	*	*	*		*		12	3
P--F--	2805-371-4615	RM536	66289	.LINE ASSEMBLY	EA	1	*	*	*		*		12	
P--F--	5360-201-2031	PM76	66289	.SPRING,HELICAL, COMPRESSION	EA	1	*	*	*		*		12	4
P--F--	5330-579-3158	MS28775-008	66289	.PACKING,PREFORMED	EA	1	*	*	*		*		12	5
P--H--	2990-358-4789	QD615	96906	.GASKET	EA	1	*	*	*		*		12	6
P--F--	5340-050-1591	MS35648-4	66289	.PLUG,EXPANSION	EA	1	*	*	*		*		12	7
X2-F--		TT61F10	96906	THROTTLE CONTROL,GOVERNOR	EA	1							12	
GEAR COVER ASSEMBLY														
P--F--	5330-360-8381	QD616	66289	GASKET	EA	1	*	*	*		*		13	1
P--F--	5330-579-9545	33S44375-5885	94135	SEAL,PLAIN ENCASED	EA	1	*	*	*		*		13	2
P--H--	2805-428-2161	QD634	66289	GASKET	EA	1	*	*	*		*		13	3
P--H--	5330-536-8818	QD633	66289	GASKET	EA	1	*	*	*		*		13	4



AV043534

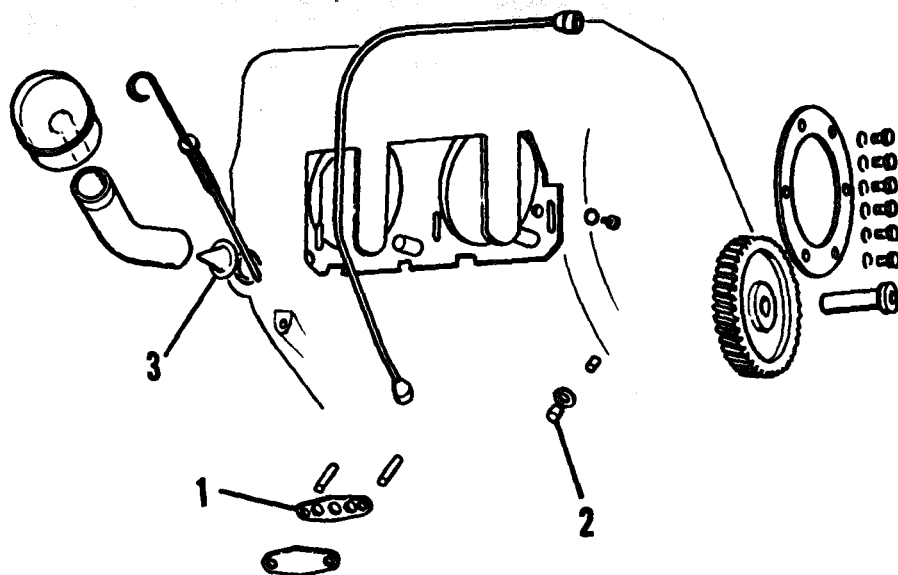
FIG. 13. GEAR COVER ASSEMBLY



AV043535

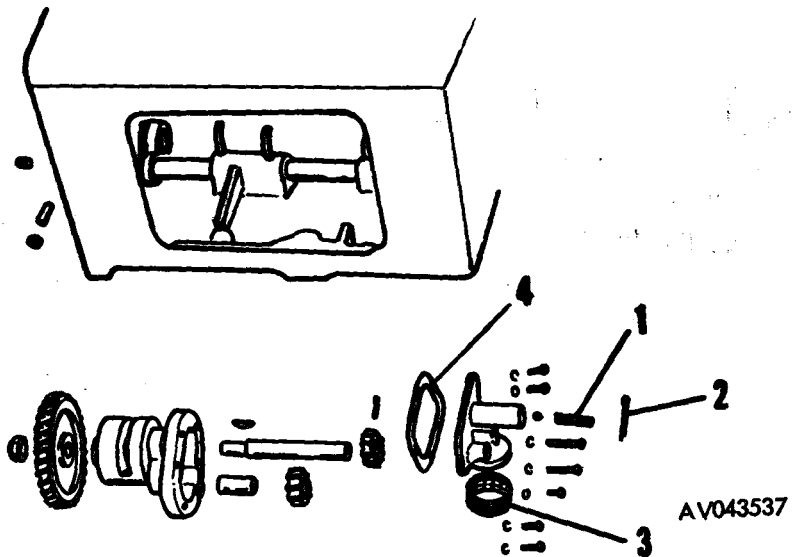
FIG. 14. MAGNETO ASSEMBLY

TM55-4920-335-24P



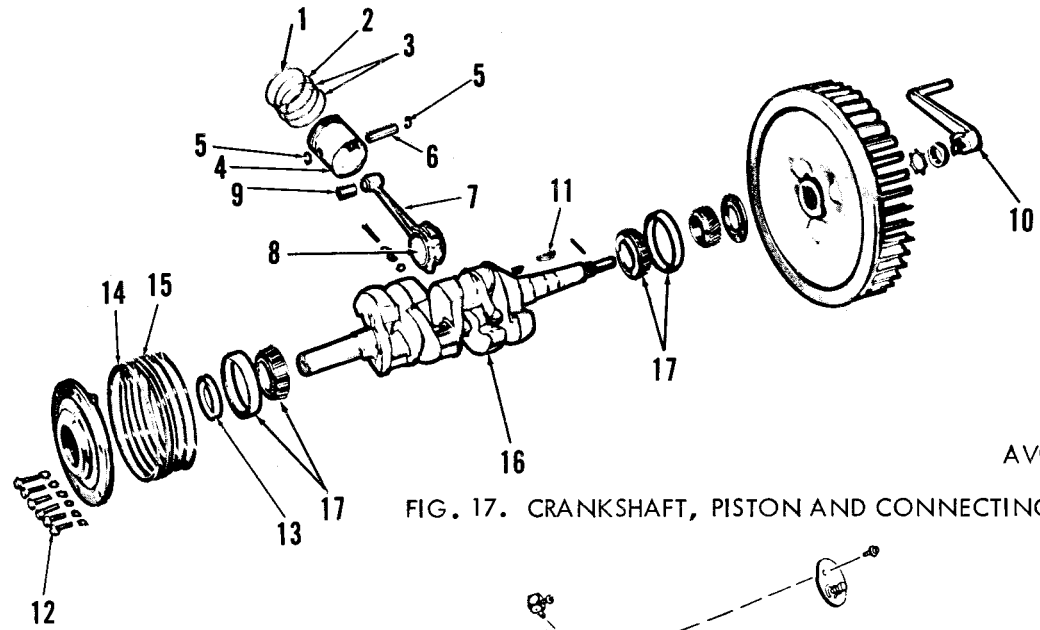
AV043536

FIG. 15. IDLER GEAR AND OIL FILLER



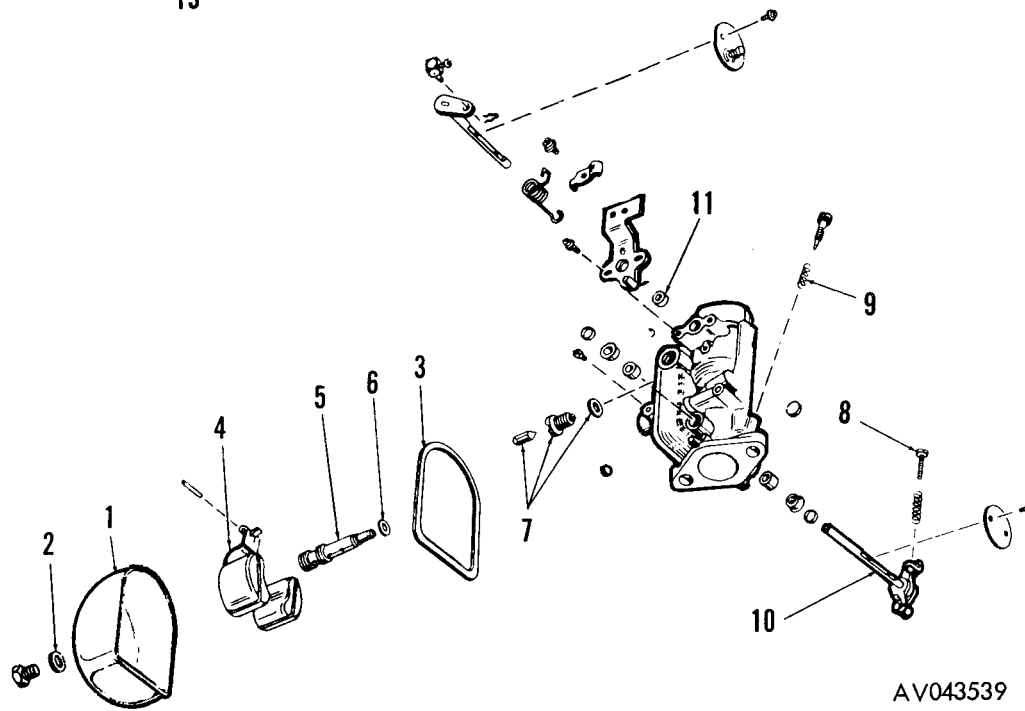
AV043537

FIG. 16. OIL PUMP ASSEMBLY



AV043538

FIG. 17. CRANKSHAFT, PISTON AND CONNECTING ROD



AV043539

FIG. 18. CARBURETOR

SECTION V		TM55-4920-335-24P				(4)	(5)	(6)			(7)	(8)	(9)			
(1)	(2)	(3)						30-DAY	DS/GS							
SMR	FEDERAL	DESCRIPTION			USABLE	UNIT	QTY	MAINT	ALW	(A)	(B)	(C)	ALW PER	DEPOT	MAINT	ILLUSTRATION
CODE	STOCK	REFERENCE NUMBER & MFR CODE			ON	OF	INC						100	100	100	(A)
	NUMBER				CODE	MEAS	IN			1-20	21-50	51-100	EQUIP	EQUIP	EQUIP	FIG
							UNIT									NO
																(B)
																ITEM
																NO
MAGNETO ASSEMBLY																
P--F--	2920-574-9437	FMXZE4B7	21387	MAGNETO, IGNITION	EA	1	*	*	*				*			14
P--H--	5910-445-6891	MX2433	82796	.CAPACITOR, FIXED	EA	1	*	*	*				*			14
P--F--	2920-142-0888	A2437AX	21387	.CONTACT SET	EA	1	*	*	*				*			14
P--H--	5330-599-2216	H2473	21387	.PACKING, PREFORMED	EA	1	*	*	*				*			14
P--F--	2920-656-7411	RS2477C	21387	.COIL, IGNITION	EA	1	*	*	*				*			14
P--H--	2920-986-1995	TS2480	21387	.ROTOR, MAGNETO	EA	1	*	*	*				*			14
P--F--	2920-566-7395	BW2563C	21387	.COUPLING, IMPLUSE, MAGNETO	EA	1	*	*	*				*			14
P--H--	2920-640-7234	X2765	21387	.ROTOR, IGNITION	EA	1	*	*	*				*			14
P--F--	2920-356-1221	G3861	82796	.SEAL, PLAIN	EA	1	*	*	*				*			14
P--F--	3110-142-0908	202-0D2	21387	.BEARING, BALL, ANNULAR	EA	1	*	*	*				*			14
P--F--	3110-844-7154	D5949A	21387	.BEARING, ROLLER, SELF--ALIGNING	EA	1	*	*	*				*			14
P--H--	2920-997-1454	SK90	21387	PARTS KIT, IGNITION MAGNETO	EA	V	*	*	*				*			14
IDLER GEAR AND OIL FILLER																
P--H--	5330-536-1257	QD595A	66289	GASKET	EA	1	*	*	*				*			15
X2-F--		92015	08645	PLUG, PIPE	EA	5										15
P--F--	2805-360-8336	RC91	66289	STRAINER, ELEMENT, SEDIMENT	EA	1	*	*	*				*			15
OIL PUMP ASSEMBLY																
P--H--	4320-353-5884	K95L	66289	PUMP, ROTARY, POWER DRIVEN	EA	1	*	*	*				*			16
P--H--	2805-253-6919	PM111	66289	.SPRING, HELICAL, COMPRESSION	EA	1	*	*	*				*			16
P--H--	5315-839-5822	MS28665-353	96906	.PIN, COTTER	EA	1	*	*	*				*			16
P--H--	2805-332-3722	RD112	66289	.STRAINER, ELEMENT, SEDIMENT	EA	1	*	*	*				*			16
P--F--	5330-765-2842	QD535A	66289	.GASKET	EA	1	*	*	*				*			16
CRANKSHAFT, PISTON AND CONNECTING ROD																
P--H--	2805-089-0560	DR25	66289	RING SET, PISTON, STANDARD SIZE	EA	1	*	*	*				*			17
P--H--	2805-733-3223	DR25S20	66289	RING, SET, PISTON, 0.620 IN. OVERSIZE	EA	1	*	*	*				*			17
P--F--	2805-554-3951	MS13933-7	96906	RING, PISTON, COMPRESSION, NO. 1 GROOVE, STANDARD SIZE	EA	4	*	*	*				*			17



SECTION V		TM55-4920-335-24P				(4)	(5)	(6)			(7)	(8)	(9)	
(1)	(2)	(3)				UNIT	QTY	30-DAY DS/GS			1-YR	DEPOT	ILLUSTRATION	
SMR	FEDERAL	DESCRIPTION			USABLE	OF	INC				ALW PER	MAINT	(A)	(B)
CODE	STOCK	REFERENCE NUMBER & MFR CODE			ON	MEAS	IN	(A)	(B)	(C)	100	100	FIG	ITEM
	NUMBER				CODE		UNIT	1-20	21-50	51-100	EQUIP	EQUIP	NO	NO
X2-H--		MS13933-8	96906	RING,PISTON,COMPRESSION,NO. 1	EA		4						17	1
X2-H--		MS13933-9	96906	GROOVE,0.020 IN. OVERSIZE	EA		4						17	1
P--F--	2805-640-8637	MS13932-7	96906	RING,PISTON,COMPRESSION,NO. 1	EA		4	*	*	*		*	17	2
X2-H--		MS13932-8	96906	GROOVE,STANDARD SIZE	EA		4						17	2
X2-H--		MS13932-9	96906	RING,PISTON,COMPRESSION,NO. 2	EA		4						17	2
P--F--	2805-555-6093	MS13931-10	96906	GROOVE,0.020 IN. OVERSIZE	EA		8	*	*	*		*	17	3
X2-H--		MS13931-11	96906	RING,PISTON,OIL,NO.364 GROOVE	EA		8						17	3
X2-H--		MS13931-12	96906	0.020 IN.OVERSIZE	EA		8						17	3
P--H--	2805-554-9255	MS13957-1	96906	RING,PISTON,OIL,NO.3&4 GROOVE	EA		4	*	*	*		*	17	4
P--H--	2805-554-9822	MS13957-2	96906	0.040 IN.OVERSIZE	EA		4	*	*	*		*	17	4
P--H--	2805-540-5299	MS13957-3	96906	PISTON,INTERNAL COMBUSTION ENGINE,	EA		4	*	*	*		*	17	4
P--H--	5365-374-9707	MS13962-1	96906	0.040 IN.OVERSIZE	EA		8	*	*	*		*	17	5
P--F--	2805-554-1005	MS13996-2	96906	.RING,RETAINING	EA		4	*	*	*		*	17	6
P--H--	2805-605-1491	DA66A4S1	66289	.PIN,PISTON	EA		4	*	*	*		*	17	7
P--H--	3120-817-5081	MS13993-1	96906	ROD ASSEMBLY,CONNECTING	EA		8	*	*	*		*	17	8
P--H--	3120-374-9710	MS13963-1	96906	.BEARING HALF,SLEEVE	EA		4	*	*	*		*	17	9
P--F--	2990-647-1934	U230B	66289	.BEARING,SLEEVE	EA		1	*	*	*		*	17	10
X2-F--		PL24	66289	CRANK,STARTING	EA		1	*	*	*		*	17	11
P--F--	5305-269-3213	XD29	66289	KEY,WOODRUFF	EA		6	*	*	*		*	17	12
P--H--	5330-383-3549	PH202	66289	SCREW,CAP,HEXAGON HEAD	EA		1	*	*	*		*	17	13
P--H--	5330-584-1621	QD636A	66289	SEAL,PLAIN ENCASED	EA		3	*	*	*		*	17	14
P--H--	5340-584-1613	QF67C	66289	GASKET	EA		1	*	*	*		*	17	15
X2-H--		CA69E4S1	66289	SHIM	EA		1	*	*	*		*	17	16
P--H--	3110-100-4162	ME98	66289	CRANKSHAFT	EA		2	*	*	*		*	17	17
				BEARING,ROLLER	EA		2	*	*	*		*	17	17
				CARBURETOR										
P--F--	2910-255-2298	10-2855	96152	CARBURETOR,FLOAT	EA		1	*	*	*		*	18	
X2-F--		65-172	96152	.FLOAT,BOWL	EA		1	*	*	*		*	18	1
P--F--	5310-291-7918	16-4	96152	.WASHER,FLAT	EA		2	*	*	*		*	18	2
P--F--	5330-522-5358	16A105	96152	.GASKET	EA		1	*	*	*		*	18	3
P--F--	2910-429-2155	30-666	96152	.FLOAT AND LEVER	EA		1	*	*	*		*	18	4
X2-F--		47-395	96152	.NOZZLE,MAIN	EA		1	*	*	*		*	18	5
P--F--	5310-496-5413	16-456	96152	.WASHER,FLAT	EA		1	*	*	*		*	18	6
P--F--	2910-364-4996	233-536	96152	.VALVE AND SEAT	EA		1	*	*	*		*	18	7
P--F--	2910-328-9833	15-42	96152	.SCREW,THROTTLE ADJUSTING	EA		1	*	*	*		*	18	8

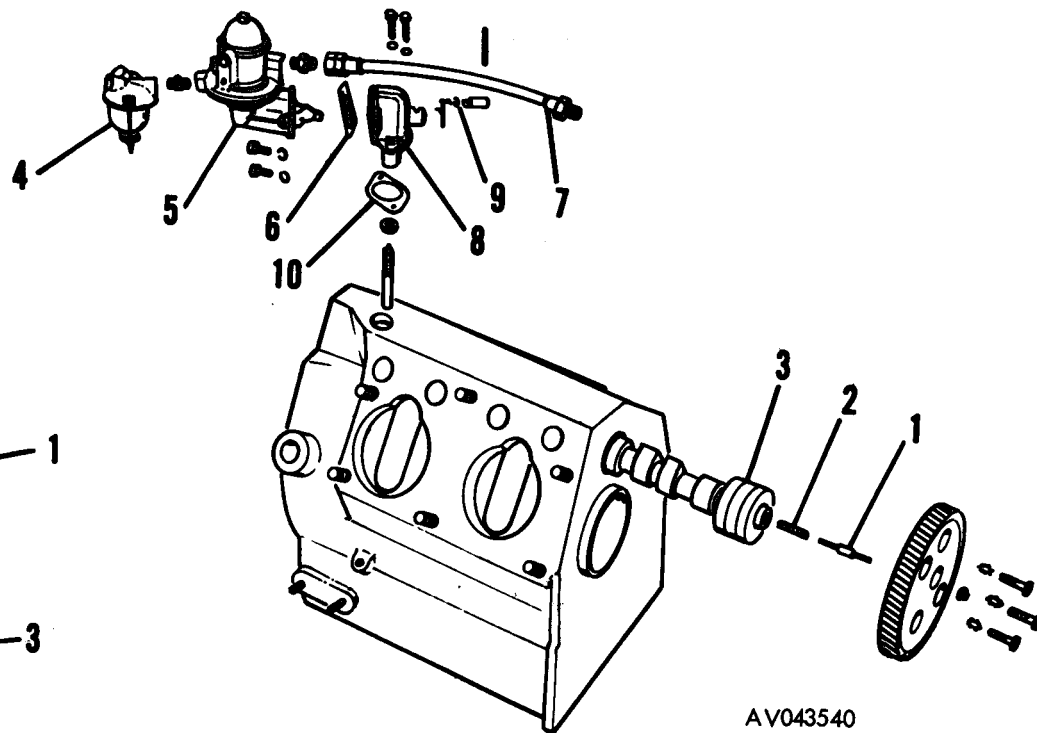


FIG. 19. CAMSHAFT AND FUEL PUMP

AV043540

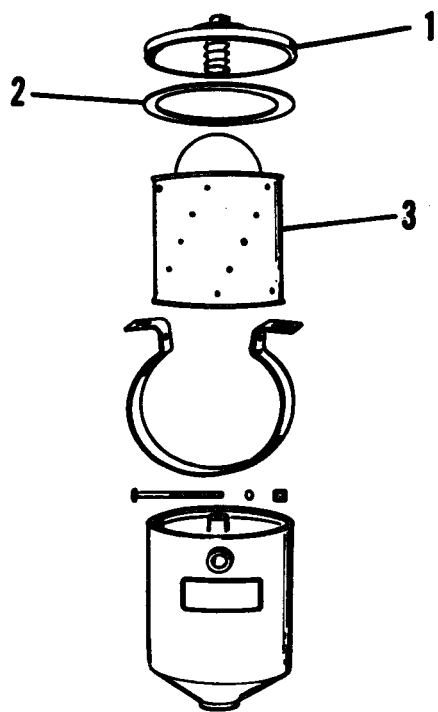
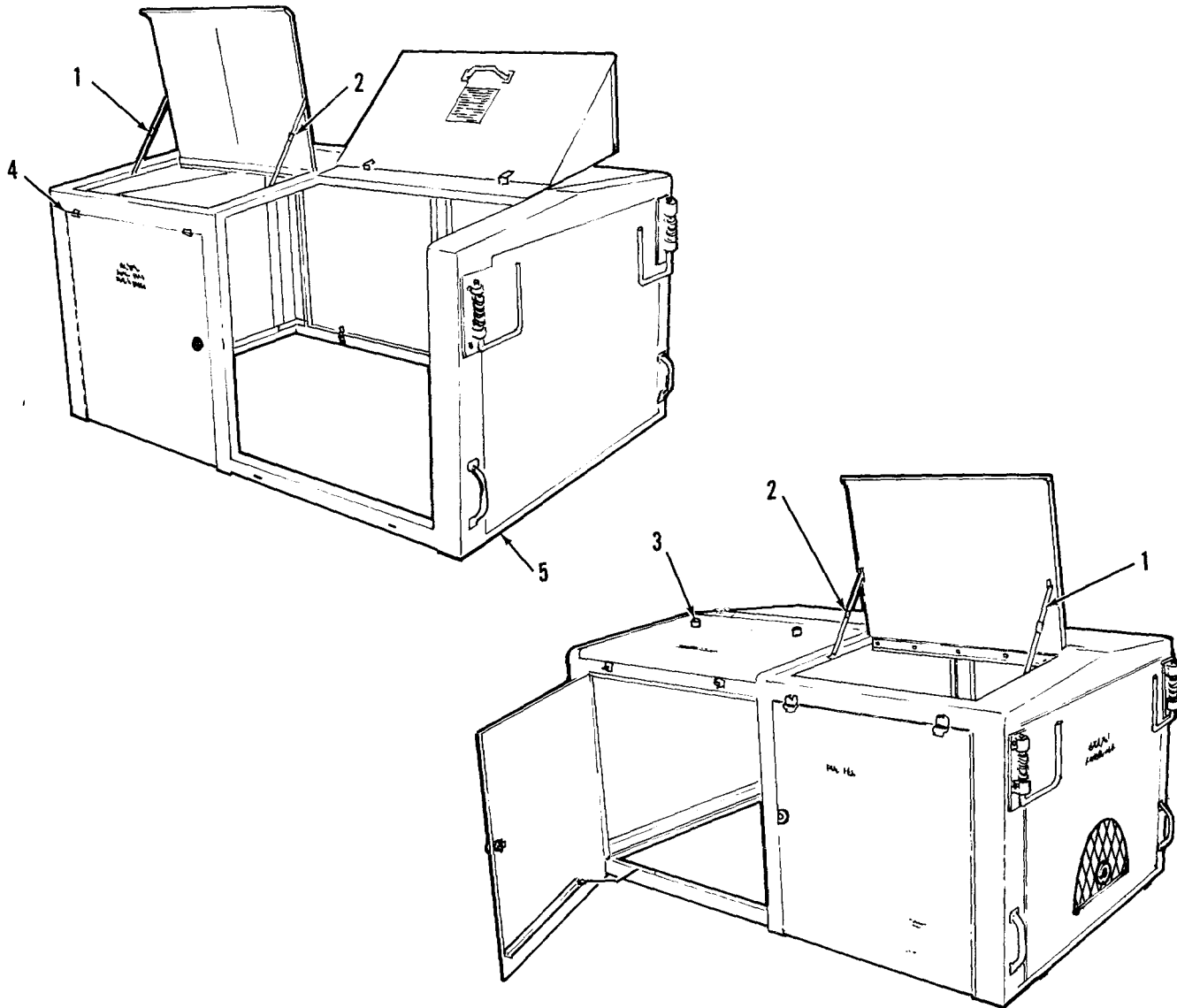


FIG. 20. OIL FILTER

AV043541

TM 55-4920-335-24P

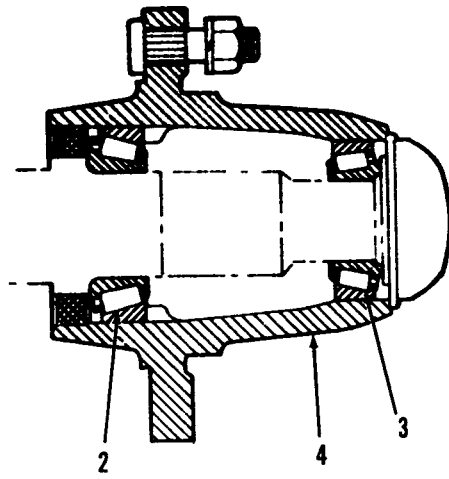


AV043542

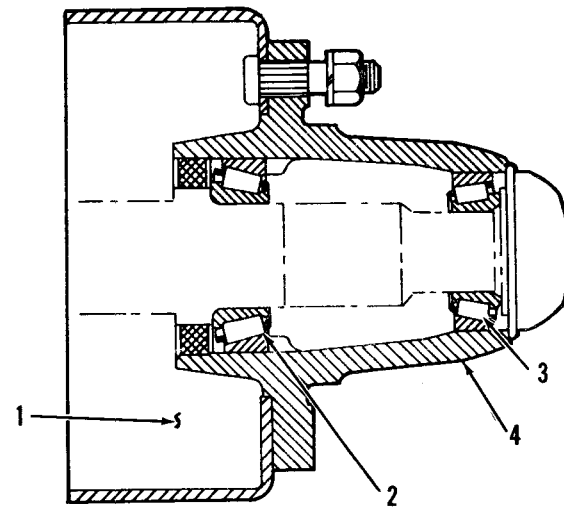
FIG 21. HOUSING ASSEMBLY

SECTION V		TM55-4920-335-24P																
(1)	(2)	(3)		(4)			(5)			(6)			(7)		(8)		(9)	
SMR	FEDERAL	DESCRIPTION		USABLE	UNIT	QTY	30-DAY DS/GS			1-YR	DEPOT	ILLUSTRATION						
CODE	STOCK	REFERENCE NUMBER & MFR CODE		ON	OF	INC	MAINT ALW			ALW PER	MAINT	(A)	(B)					
	NUMBER			CODE	MEAS	IN	(A)	(B)	(C)	100	100	FIG	(B)					
						UNIT	1-20	21-50	51-100	EQUIP	EQUIP	NO	ITEM					
													NO					
X2-F--		24-485	96152		EA	1						18	9					
X2-F--		13-956	96152		EA	1						18	10					
P--F--	5330-726-0220	44-38	96152		EA	1	*	*	*		*	18	11					
CAMSHAFT AND FUEL PUMP																		
P--F--	2805-366-6248	PF101	66289		EA	1	*	*	*		*	19	1					
P--F--	2805-366-6249	PM108	66289		EA	1	*	*	*		*	19	2					
P--F--	2805-524-9552	EA112	66289		EA	1	*	*	*		*	19	3					
P--F--	2910-905-9792	MS51086-1	96906		EA	1	*	*	*		*	19	4					
P--F--	2910-269-7126	OW363	78480		EA	1	*	*	*		*	19						
P--F--	5330-187-2962	06096	78480		EA	1	*	*	*		*	19						
P--F--	2910-339-4836	LP38C	66289		EA	1	*	*	*		*	19	5					
P--F--	5330-599-3966	24240	79150		EA	1	*	*	*		*	19	6					
X2-F--		RM1319L	66289		EA	1						19	7					
P--F--	2910-777-7183	TF96-4	66289		EA	1	*	*	*		*	19	8					
P--F--	5330-260-9311	AN6227B5	88044		EA	1	*	*	*		*	19	9					
P--F--	5330-366-6351	QD67	66289		EA	1	*	*	*		*	19						
P--F--	5330-645-4275	Q18B	66289		EA	V	*	*	*		*	19						
OIL FILTER																		
P--O--	5310-282-9555	F21P	73370			1						20						
P--O--	5330-599-1285	11581	73370		EA	1	*	*	*		*	20	1					
P--O--	2940-141-9025	11582-2	73370		EA	1	*	*	*		*	20	2					
P--O--		C21P	73370		EA	1	*	*	*		*	20	3					
GROUP 04 MISCELLANEOUS																		
HOUSING ASSEMBLY																		
P--F--	5340-134-3266	8-47-104-5	94222		EA	10	*	*	*		*	21						
P--O--	5340-847-8287	61-3653CRH	42689		EA	4	*	*	*		*	21	1					
P--O--	5340-847-8286	61-3653CLH	42689		EA	5	*	*	*		*	21	2					
P--F--	5340-598-7100	1326	70485		EA	2	*	*	*		*	21	3					
P--F--	5340-113-9395	HC362CE	98003		EA	8	*	*	*		*	21	4					

TM 55-4920-335-24P



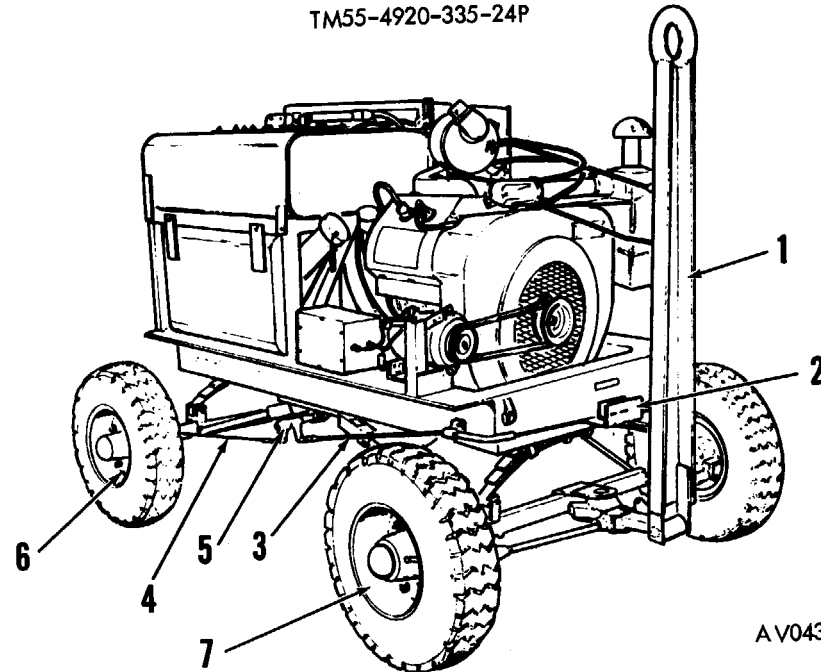
FRONT HUB ASSEMBLY



REAR HUB ASSEMBLY

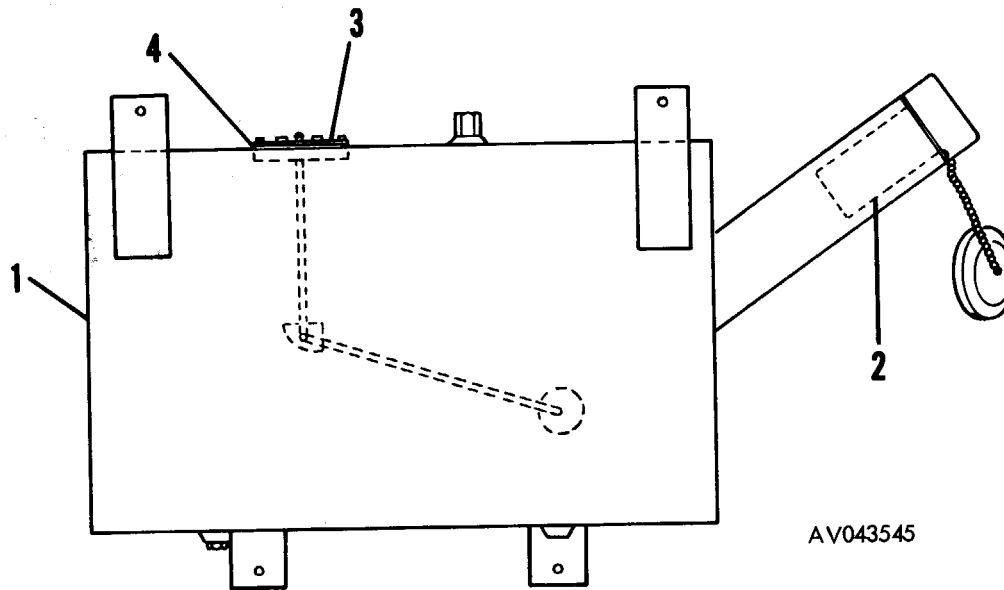
AV043543

TM55-4920-335-24P



AV043544

FIG. 23. DRAWBAR AND BRAKE ASSEMBLY



AV043545

FIG. 24. FUEL TANK

SECTION V		TM55-4920-335-24P												
(1)	(2)	(3)			(4)	(5)	(6)			(7)	(8)	(9)		
SMR	FEDERAL	DESCRIPTION			USABLE	UNIT	QTY	30-DAY DS/GS			1-YR	DEPOT	ILLUSTRATION	
CODE	STOCK	REFERENCE NUMBER & MFR CODE			ON	OF	INC	MAINT	ALW		ALW PER	MAINT	(A)	(B)
	NUMBER				CODE	MEAS	IN	(A)	(B)	(C)	100	100	FIG	ITEM
							UNIT	1-20	21-50	51-100	EQUIP	EQUIP	NO	NO
P--F--	5340-582-3934	SCD20650-25	88240	STRIKE,CATCH	EA	4	*	*	*		*		21	5
				HUB AND DRUM ASSEMBLY										
X2-F--		11-606	95026	HUB AND DRUM ASSEMBLY,REAR	EA	2							22	1
P--F--	3110-275-0283	15123-15245	60038	CONE AND ROLLERS,TAPERED ROLLER	EA	4	*	*	*		*		22	2
				BEARING										
P--F--	3110-100-5301	24780-24720	60038	CONE AND ROLLERS,TAPERED ROLLER	EA	4	*	*	*		*		22	3
				BEARING										
P--F--	2530-893-0568	606	95026	HUB,CANTILEVER	EA	4	*	*	*		*		22	4
				DRAWBAR AND BRAKE ASSEMBLY										
X2-F--		5-7016	95026	DRAWBAR ASSEMBLY	EA	1							23	1
X2-F--		6-7064	95026	LEVER,MANUAL CONTROL	EA	1							23	2
X2-H--		600-2	95026	CABLE ASSEMBLY,BRAKE	EA	1							23	3
X2-H--		600-3	26519	CABLE ASSEMBLY,BRAKE	EA	2							23	4
X2-F--		7047-4	26519	HANGER,SHAFT	EA	2							23	5
P--F--	2530-286-3440	8104-11	95026	BRAKE SHOE,INTERNAL	EA	4	*	*	*		*		23	6
P--O--	2530-528-7224	MS24325-1	95026	WHEEL,PNEUMATIC TIRE	EA	4	*	*	*		*		23	7
				FUEL TANK										
P--O--	2910-134-4916	6717R1	26519	TANK,FUEL,ENGINE	EA	1	*	*	*		*		24	1
P--F--	2910-247-6595	672054	26519	STRAINER,SEDIMENT	EA	1	*	*	*		*		24	2
P--F--	6680-435-4228	385B	57733	SENDER,FUEL GAGE	EA	1	*	*	*		*		24	3
X2-F--		GA3044-14	57733	TANK UNIT,FUEL	EA	1							24	
P--F--	5330-521-4389	257H1	50513	.GASKET	EA	1	*	*	*		*		24	4
				MAINTENANCE SUPPLIES										
P--F--	9150-190-0904			GREASE,AUTOMOTIVE AND ARTILLERY,	LB	V	*	*	*		*		MSUP	
				MIL-C-19024										
P--F--	9150-235-9072	L15016A	81349	LUBRICATING OIL,GENERAL PURPOSE	GL	V	*	*	*		*		MSUP	
				MIL-L-15016										
P--F--	9150-265-9436			LUBRICATING OIL,ENGINE,MIL-L-2104	GL	V	*	*	*		*		MSUP	

## SECTION VII

TM55-4920-335-24P

## SECTION VII

STOCK NUMBER	FIGURE NUMBER	ITEM NUMBER	STOCK NUMBER	FIGURE NUMBER	ITEM NUMBER
2530-286-3440	23	6	3110-100-5301	22	3
2530-528-7224	23	7	3110-100-6151	8	20
2530-893-0568	22	4	3110-100-6158	8	12
2805-089-0560	17		3110-117-0575	12	3
2805-221-8898	3	5	3110-117-0587	12	2
2805-253-6919	16	1	3110-142-0908	14	9
2805-332-3722	16	3	3110-227-3237	8	10
2805-339-5589	11	5	3110-275-0283	22	2
2805-360-8326	15	3	3110-769-5994	8	3
2805-366-6248	19	1	3110-844-7154	14	10
2805-366-6249	19	2	3120-374-9710	17	9
2805-371-4615	12		3120-817-5081	17	8
2805-374-9746	11	3	4320-353-5884	16	
2805-399-6984	10	9	4320-631-1645	8	18
2805-424-2806	11	8	4320-631-4045	8	5
2805-428-2159	10	10	4320-650-9236	8	24
2805-428-2161	13	3	4320-650-9237	8	23
2805-505-5191	11	6	4320-712-4639	8	25
2805-524-9552	19	3	4320-779-0200	8	22
2805-528-6097	11	4	4320-932-1006	8	7
2805-536-8804	11	2	4330-016-1131	7	
2805-540-5299	17	4	4330-277-3274	6	1
2805-554-1005	17	6	4330-288-6907	6	
2805-554-3951	17	1	4330-804-1541	7	3
2805-554-9255	17	4	4710-150-6062	9	1
2805-554-9822	17	4	4710-150-6063	9	2
2805-555-6093	17	3	4730-042-8988	2	
2805-574-8856	11	9	4730-186-9492	9	4
2805-605-1491	17	7	4730-186-9961	9	26
2805-624-9940	10	5	4730-186-9961	9	30
2805-624-9949	11	1	9730-187-0489	9	28
2805-640-8637	17	2	4730-187-0840	9	15
2805-733-3223	17		4730-187-1396	9	5
2805-882-8033	11	7	4730-231-3017	9	22
2805-968-1793	1		4730-231-3026	9	12
2910-134-4916	24	1	4730-231-3031	9	27
2910-247-6595	24	2	4730-231-4009	9	21
2910-255-2298	18		4730-231-5622	9	16
2910-269-7126	19		4730-278-2682	9	31
2910-328-9833	18	8	4730-278-5006	9	13
2910-339-4836	19	5	4730-287-1022	9	25
2910-364-4996	18	7	4730-287-1025	9	3
2910-424-7431	7	1	4730-287-1027	9	8
2910-429-2155	18	4	4730-540-0392	9	37
2910-777-7183	19	8	4730-541-1115	9	35
2910-905-9792	19	4	4730-561-1544	9	36
2910-986-4204	7	2	4730-640-1878	9	39
2920-105-2571	3		4730-684-6903	9	
2920-142-0888	14	2	4730-684-6903	9	14
2920-221-8899	3	2	4730-711-4411	9	33
2920-289-7903	3	3	4730-715-0018	9	34
2920-356-1221	14	8	4730-722-7216	9	19
2920-547-4335	3		4730-722-8599	9	7
2920-566-7395	14	6	4730-725-4351	9	10
2920-574-9437	14		4730-802-9319	9	6
2920-640-7234	14	7	4730-804-1923	9	20
2920-656-7411	14	4	4730-925-4752	9	24
2920-810-7082	10	14	4820-234-6242	2	15
2920-887-1289	4	3	4820-234-6242	5	
2920-924-2042	4	2	4820-236-6341	9	23
2920-925-1417	3		4820-241-4408	2	13
2920-941-6108	4	1	4820-247-3233	2	11
2920-986-1995	14	5	4820-254-5853	2	12
2920-997-1454	14		4820-922-8365	5	2
2940-141-9025	20	3	4920-324-1756	8	21
2990-358-4789	12	6	4920-652-6977	8	13
2990-624-9956	122		4920-714-5622	2	14
2990-647-1934	17	10	4920-882-6401	1	
2990-993-0447	10		4920-960-1104	8	27
3010-552-2148	8		5305-269-3213	17	12
3110-100-4162	17	17	5310-196-6695	7	4



## SECTION VII

TM55-4920-335-24P

## SECTION VII

STOCK NUMBER	FIGURE NUMBER	ITEM NUMBER	STOCK NUMBER	FIGURE NUMBER	ITEM NUMBER
5310-208-5769	9	11	5330-978-2831	5	5
5310-282-7823	9	9	5330-987-9122	8	17
5310-282-7831	9	18	5330-987-9123	8	16
5310-282-9555	20	1	5330-987-9304	8	4
5310-291-7918	18	2	5330-987-9305	8	2
5310-496-5413	18	6	5340-050-1571	10	11
5315-839-5822	16	2	5340-050-1591	12	7
5330-020-3053	5	7	5340-113-9395	21	4
5330-085-5141	8	32	5340-134-3247	9	40
5330-186-4938	6	3	5340-134-3266	21	
5330-187-2962	19		5340-324-8619	5	4
5330-248-3844	5	8	5340-582-3934	21	5
5330-256-9661	8	8	5340-584-1613	17	15
5330-260-9311	19	9	5340-594-7136	9	38
5330-260-9338	6	2	5340-598-7100	21	3
5330-292-3984	10	7	5340-847-8286	21	2
5330-360-8381	13	1	5340-847-8287	21	1
5330-366-6351	19	10	5340-977-2405	8	30
5330-383-3549	17	13	5360-201-2031	12	4
5330-399-6982	10	6	5365-374-9707	17	5
5330-428-2162	10	13	5910-445-6891	14	1
5330-455-2718	5	9	5910-538-3232	3	
5330-521-4389	24	4	5920-548-3126	2	6
5330-522-5358	18	3	5920-892-3111	2	6
5330-536-1257	15	1	5930-134-5720	3	
5330-536-8818	13	4	5930-134-5721	9	29
5330-576-8377	2		5930-134-5722	9	
5330-576-8377	8	19	5930-224-5668	4	5
5330-579-3158	12	5	5930-251-7595	2	7
5330-579-3163	9		5930-274-5124	2	3
5330-579-9545	13	2	5930-775-7577	3	
5330-584-1621	17	14	6110-463-5007	3	1
5330-584-2278	8	29	6210-803-9882	2	1
5330-599-1285	20	2	6240-155-7967	2	2
5330-599-2216	14	3	6620-698-6700	2	9
5330-599-5966	19	6	6625-420-8623	2	4
5330-624-9938	10	2	6680-247-3272	2	17
5330-645-4275	19		6680-247-3273	2	8
5330-726-0220	18	11	6680-435-4228	24	3
5330-734-8716	8	1	6680-702-9661	2	10
5330-765-2842	16	4	6685-324-1667	9	17
5330-860-1439	5	3	6685-585-4511	2	16
5330-865-9741	8	31	9150-190-0904	MSUP	
5330-973-4292	8	9	9150-235-9072	MUSP	
5330-973-4313	8	14	9150-265-9436	MSUP	
5330-978-2828	5	6			

## SECTION VII

TM55-4920-335-24P

## SECTION VII

REFERENCE NUMBER	MFG CODE	FIG NUMBER	ITEM NUMBER	REFERENCE NUMBER	MFG CODE	FIG NUMBER	ITEM NUMBER
AA34-6PWRW	64467	2	16	MS13998-1	96906	11	3
AA90A2S1	66289	11		MS13999-8	96906	11	7
AB97B2S1	66289	10	8	MS19059-57	96906	8	12
AD42A	66289	11	9	MS20822-12	96906	9	22
AF49A	66289	11	6	MS20822-12D	96906	9	8
AG30	66289	11	5	MS20822-16D	96906	9	3
AN6227B5	88044	19	9	MS20822-20D	96906	9	25
AN6230-5	88044	6	2	MS20822-4	96906	9	21
AN6235-4A	88044	6	1	MS20822-4D	96906	9	26
AN6236-3	88044	7	3	MS20822-4D	96906	9	30
AN6238-1	88044	7	4	MS24325-1	96906	23	7
AN6244-5	88044	6	3	MS24393D4	96906	9	34
AN815-12	88044	9	28	MS24394D16	96906	9	19
AN815-4D	88044	9	24	MS24394D4	96906	9	10
AN816-16D	88044	9	4	MS24395D4	96906	9	
AN816-4	88044	9	15	MS24395D4	96906	9	14
AN826-4D	88044	9	32	MS24398D12-8	96906	9	6
AN833-12	88044	9	27	MS24400-12	96906	9	18
AN833-4	88044	9	12	MS24400D4	96906	9	9
AN910-2D	88044	9	31	MS24402-4	96906	9	20
AN916-2	88044	9	16	MS24402D12	96906	9	7
AN916-8D	88044	9	5	MS24665-353	96906	16	2
AN924A	88044	9	11	MS25331-9	96906	2	1
AN929-4	88044	9	13	MS28720-12	96906	6	
AN929-4D	88044	9	33	MS28775-008	96906	12	5
A2437AX	21387	14	2	MS28775-214	96906	9	
BW2563C	21387	14	6	MS29513-113	96906	5	8
CA69E4S1	66289	17	16	MS35648-4	96906	10	11
CY10C	66289	2	3	MS35648-4	96906	12	7
C21P	73370	20	3	MS49005-4	96906	2	
DA66A4S1	66289	17	7	MS51009-1	96906	10	14
PR25	66289	17		MS51011-10	96906	4	3
DR25S20	66289	17		MS51011-13	96906	4	1
D5949A	21387	14	10	MS51011-14	96906	4	2
EA112	66289	19	3	MS51086-1	96906	19	4
EBB44B	95688	3		MS51961-3	96906	8	10
FHN26G1	81349	2	6	MVG4D303059	66289	3	5
FMXZE4B7	21387	14		MX2433	82796	14	1
F02A250V6A	81349	2	6	PF101	66289	19	1
F21P	73370	20		PH202	66289	17	13
F65	66289	11	1	PL24	66289	17	11
G3861	21387	14	8	PM108	66289	19	2
G43044-14	57733	24		PM111	66289	16	1
HC362CE	98003	21	4	PM76	66289	12	4
HG150D	66289	11	8	P10M014T	97399	2	11
H2473	21387	14	3	P32-54	81321	7	
K95L	66289	16		QB83	66289	10	7
LF131	66289	10	1	QC62	66289	10	6
LP38C	66289	19	5	QD482	66289	11	2
L15016A	81349	MSUP		QD535A	66289	16	4
MBG4116T	19728	3		QD595A	66289	15	1
ME111	66289	12	3	QD615	66289	12	6
ME112	66289	12	2	QD616	66289	13	1
ME98	66289	17	17	QD631	66289	10	9
MS13931-10	96906	17	3	QD632	66289	10	10
MS13931-11	96906	17	3	QD633	66289	13	4
MS13931-12	96906	17	3	QD634	66289	13	3
MS13932-7	96906	17	2	QD635	66289	10	13
MS13932-8	96906	17	2	QD636A	66289	17	14
MS13932-9	96906	17	2	QD67	66289	19	10
MS13933-7	96906	17	1	QD727	66289	10	2
MS13933-9	96906	17	1	QF67C	66289	17	15
MS139338	96906	17	1	QF91	66289	10	5
MS13957-1	96906	17	4	QS24S	06499	3	
MS13957-2	96906	14	4	Q18B	66289	19	
MS13957-3	96906	17	4	Q27	66289	11	
MS139621	96906	17	5	RC91	66289	15	3
MS13963-1	96906	17	9	RD112	66289	16	3
MS13993-1	96906	17	8	RML319L	66289	19	7
MS13996-2	96906	17	6	RM536	66289	12	
MS13997-1	96906	11	4	RS11C	66289	2	9

## SECTION VII

TM 55-4920-335-24P

## SECTION VII

REFERENCE NUMBER	MFG CODE	FIG NUMBER	ITEM NUMBER	REFERENCE NUMBER	MFG CODE	FIG NUMBER	ITEM NUMBER
RS2477C	21387	14	4	15123-15245	60038	22	2
RS50C	66289	2	10	155S7-12	00624	9	36
RLV12-545	16954	2	12	155S7-8D	00624	9	38
SA58	66289	10	12	16-4	96152	18	2
SCD20650-25	88240	21	5	16-456	96152	18	6
SD99768X	16954	8		16A105	96152	18	3
SK90	21387	14		1921091	16764	3	3
SP100-154	86768	5	7	201-08001	16954	8	20
SP100-95	86768	5	9	202-OD2	21335	14	9
SP201-95	86768	5	5	230-20207	16954	8	3
TA112AS1	66289	12		233-536	96152	18	7
TA155S4-12D	00624	9	35	2366	72653	2	7
TB155S4-8D	00624	9	37	24-485	96152	18	9
TF96-4	66289	19	8	24240	79150	19	6
TS2480	21387	14	5	24780-24720	60038	22	3
TT61F10	66289	12		25-1106D	38056	9	17
T84H1	66289	12		257H1	50513	24	4
U230B	66289	17	10	3-2054-1	86768	5	4
VE435M	66289	10	4	30-666	96152	18	4
WD50A	66289	10		3000-03	26519	8	
XD29	66289	17	12	323-10812	16954	8	6
XK1	66289	10	3	324-21608	16954	8	11
X2765	82796	14	7	33S44375-5885	94135	13	2
YC66DS1	66289	3		3300-4	26519	2	15
YC9FS1	66289	4	5	3300-4	26519	5	
YE2	66289	2	4	3310-1	25619	2	13
YL355-5	66289	4	4	385B	57733	24	3
OW363	78480	19		44-38	96152	18	11
01-18021-0	15801	3		458-12S2-24	86768	9	23
035-11900	16954	8	17	47-395	96152	18	5
035-12289	16954	8	22	48P18	56289	3	
035-12421	16954	8	18	5-7016	95026	23	1
035-12592	16954	8	32	51410	24161	3	4
035-13000	16954	8	7	6-7064	95026	23	2
035-13973	16954	8	21	60E7360	72619	2	2
035-13976	16954	8	23	600-2	26519	23	3
035-13977	16954	8	24	600-3	26519	23	4
035-14007	16954	8	26	60430	81321	7	2
035-15023	16954	8	15	606	95026	22	4
035-17914	16954	8	28	61-3653CLH	42689	21	2
035-18001	16954	8	27	61-3653CRH	42689	21	1
035-18064	16954	8	5	616B12V	57733	2	8
035-18530	16954	8	13	623-09971	16954	8	1
035-22051	16954	8	25	65-172	96152	18	1
035-22404	16954	8	30	671-00008	16954	8	29
035-22731	16954	8	16	671-00010	16954	8	8
09096	78480	19		671-00012	16954	2	
10-2855	96152	18		671-00012	16954	8	19
10-2864-7	86768	5	2	671-00113	16954	8	9
11-606	95026	22	1	671-00210	16954	8	31
1102343	16764	3	2	671-00220	16954	8	4
1119257	16764	3		671-00230	16954	8	2
11581	73370	20	1	671-00241	16954	8	14
11582-2	73370	20	2	6717R1	26519	24	1
118HD1-4	30327	2	14	672054	26519	24	2
12-1455-60-1	86768	5	6	672068	26519	8	
12-556-17	86768	5	1	672093	26519	9	1
12-556-51	86768	5	3	672095	26519	9	2
1201PS	30839	9	29	673032	26519	3	1
1202PS	30839	9		674016	26519	1	
13-956	96152	18	10	7047-4	95026	23	5
1326	70485	21	3	777D	57733	12	1
145S4-16D	00624	9	39	8-47-104-15	94222	21	
145S7-16D	99879	9	40	8104-11	59026	23	6
15-42	96152	18	8	900-1	26519	2	17
15002	81321	7	1	92015	08645	15	2

**By Order of the Secretary of the Army :**

**W. C. WESTMORELAND,**  
*General, United States Army,*  
*Chief of Staff.*

**Official:**

**VERNE L. BOWERS,**  
*Major General, United States Army,*  
*The Adjutant General.*

**DISTRIBUTION :**

**To be distributed in accordance with DA Form 12-31 (qty rqr block no. 94 requirements for Organizational Maintenance Instructions for All Fixed and Rotor Wing aircraft.**





CDR  
 USA DARCCM MAT READ SPT  
 ACTIV ATTN DRXMC-MP  
 LEXINGTON KY 40511

10497

DISTRIBUTION FORM NUMBER				CHK CR DATE	
TM 55-4920-335-24P					
LOCATION	QUANTITY	UNIT	FIGURE	AC TION	RON DATE
A3291	1	EA			3116
PKS SIZE	ITEM NO	FILE REPT DATE	CORP CONTROL NO		
	405200	ELK3116	3117	02557	

ASG FORM 422, 1-51

PREVIOUS EDITION OF THIS FORM IS OBSOLETE

TM 55-4920-335-24P TEST STAND, HYDRAULIC SYSTEMS COMPONENTS P / N 674016-1971